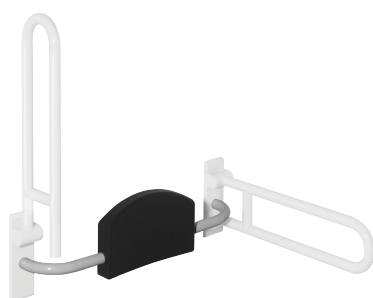


BACKREST RAILS

HINGED SUPPORT RAILS

NECESSARY FOR ALL



801.51.900

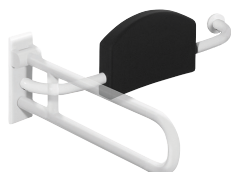
- c to c 670-730 mm adjustable on site
- 150 mm deep
- double-sided mounting
- padding made of black PUR
- rails made of glossy polyamide in 14 HEWI colours

801.51B900

- rails made of matt polyamide in 5 HEWI colours

⊕ **801.51D900**

- rails made of glossy polyamide in HEWI colour 98 (signal white), with active antimicrobial microsilver



801.51.920R (right)

801.51.920L (left)

- c to c 670-730 mm adjustable on site
- 150 mm deep
- one-sided installation
- padding made of black PUR
- rails made of glossy polyamide in 14 HEWI colours

801.51B920R (right)

801.51B920L (left)

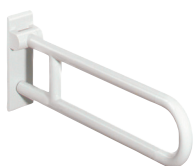
- rails made of matt polyamide in 5 HEWI colours

⊕ **801.51D920R (right)**

⊕ **801.51D920L (left)**

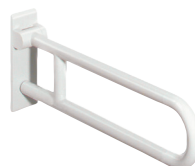
- rails made of glossy polyamide in HEWI colour 98 (signal white), with active antimicrobial microsilver

Polyamide



801.50.2...0

801.50.1...0 | rotatable



⊕ **801.50D2...0**

⊕ **801.50D1...0 | rotatable**



801.50.2...1

801.50.1...1 | rotatable



801.50.2...4S

801.50.1...4S | rotatable

Polyamide, matt edition



801.50B2...0

801.50B1...0 | rotatable



801.50B2...1

801.50B1...1 | rotatable



801.50B2...4S

801.50B1...4S | rotatable



BM10.2.1 (on both sides)

BM10.2.2 (one-sided)

For fixing on walls made of concrete (> C20/C25)
National technical approval number: ETA-11/0493

BM11.2.1 (on both sides)

BM11.2.2 (one-sided)

For fixing on walls

with mesh sleeve ø 18 mm

- hollow concrete block
- vertically perforated bricks
- hollow lightweight concrete block
- lightweight aggregate concrete with open structure

without mesh sleeve

- solid bricks
- perforated calcium silicate block

with mesh sleeve ø 22 mm

- autoclaved aerated concrete (> P2)

BM12.2.1 (on both sides)

BM12.2.2 (one-sided)

lightweight walls with rear lining made of laminated timber boards (with waterproof bonding, at least 30 mm thick required, e.g. studs or pre wall installation)



BM13.2.1 (on both sides)

BM13.2.2 (one-sided)

lightweight walls with integrated steel plates (e.g. studs or pre wall installation)