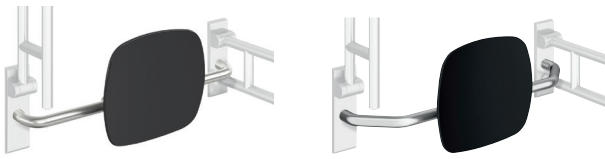


BACKREST RAILS

STATIONARY HINGED SUPPORT RAILS

NECESSARY FOR ALL

Stainless steel, satin finish



805.51.906 | double-sided mounting

- c to c 650 - 750 mm adjustable on site
- 150 mm deep
- backrest made of synthetic material in HEWI colours 98 (signal white), 92 (anthracite grey) and 90 (jet black)

805.51.907 | double-sided mounting

- do., 230 mm deep



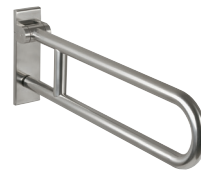
805.51.926R | hinged support rail on the right
805.51.926L | hinged support rail on the left

- c to c 650 - 750 mm adjustable on site
- 150 mm deep
- backrest made of synthetic material in HEWI colours 98 (signal white), 92 (anthracite grey) and 90 (jet black)

805.51.927R | hinged support rail on the right
805.51.927L | hinged support rail on the left

- do., 230 mm deep

Stainless steel, satin finish



- 805.50.2...
805.50.1... | rotatable
- made of stainless steel, satin finish



BM10.2.1 (on both sides)
BM10.2.2 (one-sided)

For fixing on walls made of concrete (> C20/C25)
National technical approval number: ETA-11/0493

BM11.2.1 (on both sides)
BM11.2.2 (one-sided)

For fixing on walls

with mesh sleeve ø 18 mm

- hollow concrete block
- vertically perforated bricks
- hollow lightweight concrete block
- lightweight aggregate concrete with open structure

without mesh sleeve

- solid bricks
- perforated calcium silicate block

with mesh sleeve ø 22 mm

- autoclaved aerated concrete (> P2)

BM12.2.1 (on both sides)
BM12.2.2 (one-sided)

lightweight walls with rear lining made of laminated timber boards (with waterproof bonding, at least 30 mm thick required, e.g. studs or pre wall installation)

BM13.2.1 (on both sides)
BM13.2.2 (one-sided)

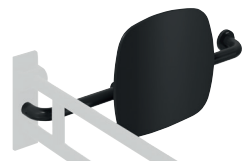
lightweight walls with integrated steel plates (e.g. studs or pre wall installation)

Stainless steel, powder-coated



805.51.90660 | double-sided mounting

- c to c 650 - 750 mm adjustable on site
- 150 mm deep
- backrest made of synthetic material in HEWI colours 98 (signal white) and 90 (jet black)



805.51.92960 | hinged support rail on the right
805.51.92860 | hinged support rail on the left

- do.

Stainless steel, powder-coated



- 805.50.2...60
805.50.1...60 | rotatable
- made of stainless steel, powder-coated in DX (matt white) and DC (matt black)



Backrest rail cannot be combined with mobile versions.

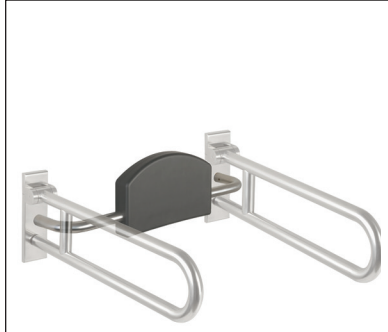
HEWI Powder coating

- ...60 DX matt white
- ...60 DC matt black

BACKREST RAILS

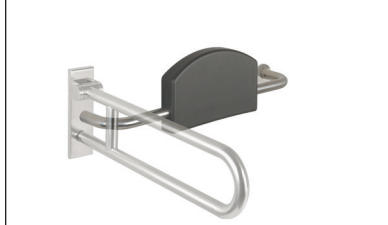
STATIONARY HINGED SUPPORT RAILS

NECESSARY FOR ALL



805.51.900

- c to c 670-730 mm adjustable on site
- 150 mm deep
- double-sided mounting
- padding made of black PUR
- rails made of stainless steel, satin finish




805.51.920R (right)
805.51.920L (left)

- c to c 670-730 mm adjustable on site
- 150 mm deep
- one-sided installation
- padding made of black PUR
- rails made of stainless steel, satin finish

+

Stainless steel, satin finish CE



805.50.2...
805.50.1... | rotatable

+

BM10.2.1 (on both sides)
BM10.2.2 (one-sided)
For fixing on walls made of concrete (> C20/C25)
National technical approval number: ETA-11/0493

BM11.2.1 (on both sides)
BM11.2.2 (one-sided)
For fixing on walls

with mesh sleeve ø 18 mm

- hollow concrete block
- vertically perforated bricks
- hollow lightweight concrete block
- lightweight aggregate concrete with open structure

without mesh sleeve

- solid bricks
- perforated calcium silicate block

with mesh sleeve ø 22 mm

- autoclaved aerated concrete (> P2)

BM12.2.1 (on both sides)
BM12.2.2 (one-sided)
lightweight walls with rear lining made of laminated timber boards (with waterproof bonding, at least 30 mm thick required, e.g. studs or pre wall installation)

BM13.2.1 (on both sides)
BM13.2.2 (one-sided)
lightweight walls with integrated steel plates (e.g. studs or pre wall installation)