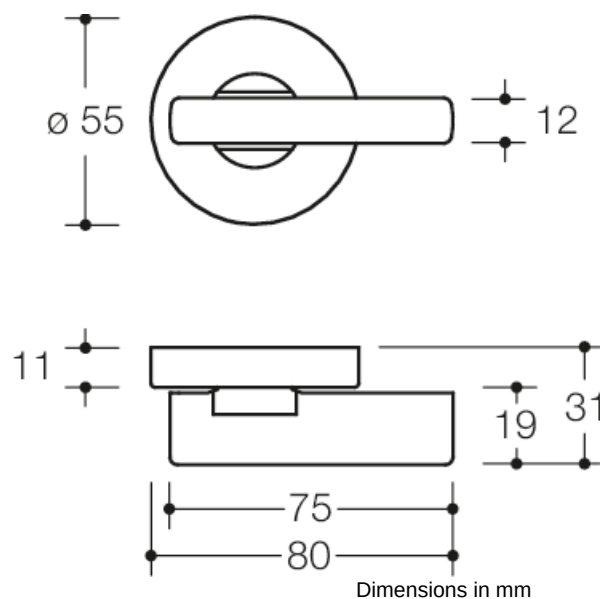


Similar picture



Properties

WC-rose made of stainless steel

Rose substructure made of synthetic material, can be used for left and right-hand opening doors. WC version with emergency opening by means of square spindle or coin and occupancy disc (red/white indicator) on the outside (long stems), turnknob on the inside (short stems). Actuating bar 75 x 12 mm in asymmetric, extended version to increase the ease of use and for use in motor restriction.

Rose cap round, made of stainless steel (1.4301), diameter 55 mm, 10.5 mm high, 1.5 mm wall thickness.

Surface satin finished

LN version - long stems, supplied without screws