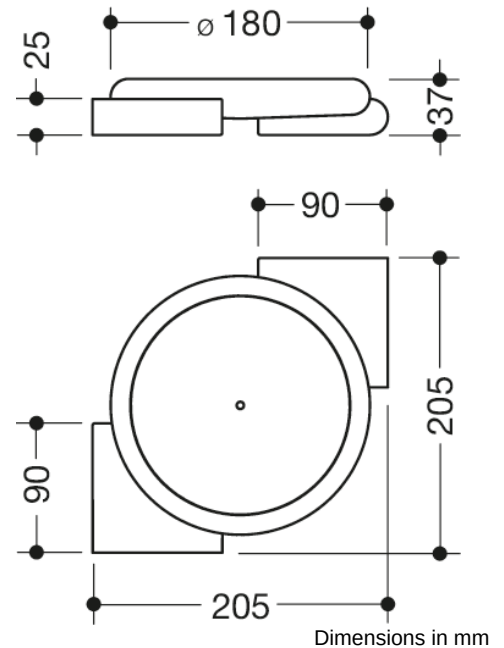




Similar picture



Properties

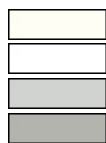
Range 477 Corner shelf

- round dish with drain hole, inserted between two holders either at right-angles or parallel to one another
- for storage utensils in shower area, a push-button facilitated release
- lockable as anti-theft protection
- for mounting on walls or in corners (80° - 135°)
- 205 mm wide, 205 mm deep and 37 mm high, shelf area 150 mm in diameter, holders 90 mm wide and deep
- holders and dish made of high-quality matt polyamide in HEWI colours 99 (pure white), 98 (signal white), 97 (light grey), 95 (stone grey) and 92 (anthracite grey)

Awards



Colours / Surfaces



99 (pure white)
98 (signal white)
97 (light grey)
95 (stone grey)



92 (anthracite grey)