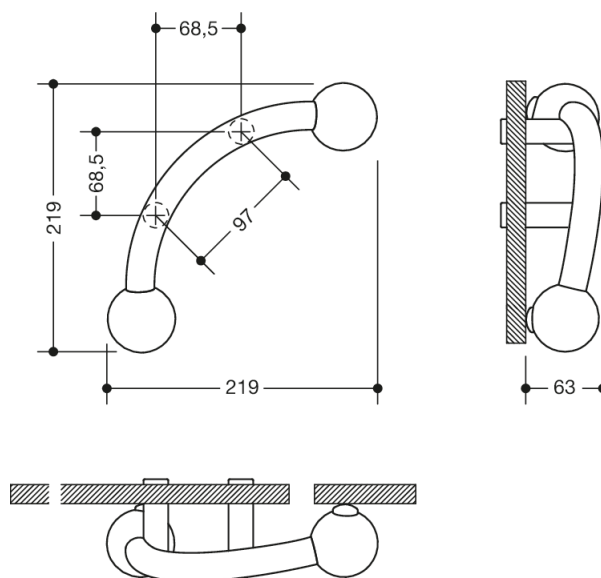




Similar picture



Dimensions in mm

Properties

Pull handle

System 111 made of solid coloured polyamide, diameter 23 mm, for one sided fixing. Curved handle diameter 23 mm, with straight supports and one coloured sphere (55 mm diameter) at each end of the handle, for fixing on cubicle doors.
centre-to-centre 97 mm

Colours / Surfaces

	99 (pure white)		92 (anthracite grey)		74 (apple green)		36 (coral)
	98 (signal white)		90 (jet black)		72 (may green)		33 (ruby red)
	97 (light grey)		86 (sand)		55 (aqua blue)		24 (orange)
	95 (stone grey)		84 (umber)		50 (steel blue)		18 (mustard yellow)