

# EN 179

## Emergency exit device



# HEWI

### Obligation to apply standard:

Applies to emergency exits at which panic situations are not to be expected. The people in the building are familiar with the exits and their fittings.


### Approved are:

Door lever fittings, push/pull handles (push pads) and other hardware elements, which have been designed for use in emergency situations. Panic bars to EN 1125 are naturally also approved, because a higher safety level is allowed.

### Please note:

The hardware and lock must always be tested and certified together. But they can be specified and delivered separately.

### Implementation of EN 179 – emergency exit device

- HEWI emergency exit hardware to EN 179 is certified with the locks of the manufacturers given in the following list.
- A jointly certified system of lock and hardware can still also be supplied separately.
- Allowable HEWI emergency exit hardware is shown on page two. All fire safety versions of this HEWI hardware are certified to EN 179 and are marked with a corresponding sticker on dispatch. 

### Ordering information

The following applies to all the illustrated forms of lever handle:

HEWI fire safety roses or backplate fittings with 9 mm square spindle are approved for use with certified locks as an emergency exit device to EN 179.

### Certified locks

For the named lock manufacturers – unless stated otherwise – all locks of the respective manufacturer certified to EN 179 together with the given HEWI hardware may be used as an emergency exit device to EN 179. Further information on the respective locks is available from the lock manufacturers.



## ALLOWABLE HEWI HARDWARE:

### SYSTEM 100 STAINLESS STEEL



Lever handle design  
103X



Lever handle design  
104X

### SYSTEM 111 STAINLESS STEEL



Lever handle design  
111X

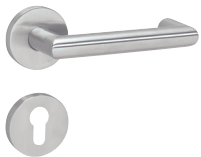


Lever handle design  
112X



Lever handle design  
113X

### SYSTEM 162 STAINLESS STEEL



Lever handle design  
165X



Lever handle design  
166X

### SYSTEM 162 POLYAMIDE | MATT EDITION



Lever handle design  
165.21P...



Lever handle design  
166.21P...

### RANGE 170 STAINLESS STEEL

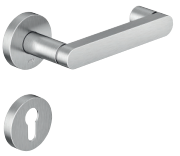


Lever handle design  
173X



Lever handle design  
174X

### RANGE 270 STAINLESS STEEL



Lever handle design  
272XA



Lever handle design  
273XA

### SYSTEM 111 POLYAMIDE | MATT EDITION



Lever handle design  
111...



Lever handle design  
111.23...



Lever handle design  
115.23



Lever handle design  
114.23GK...

## Lock partner EN 179

<b>Lock manufacturer</b>	<b>EN 179 FS hardware in HEWI R and H technology for all forms of approved lever handle</b>	<b>Certificate number of constancy of performance</b>
Abloy Oy (Assa Abloy)	HEWI marking: VE 30-26	on request
effeff (Assa Abloy) Fritz Fuss GmbH & Co. KGaA	HEWI marking: VE 30-26	0432-CPR-00007-11 0432-CPR-00007-14
BKS GmbH	HEWI marking: VE 30-26	0432-CPR-00029-03 0432-CPR-00029-04
BMH Beyer & Müller GmbH + Co.	HEWI marking: VE 30-26	0432-CPR-00082-01
Dorma GmbH	HEWI marking: VE 30-26	0432-CPR-00026-11
Karl Fuhr GmbH & Co. KG	HEWI marking: VE 30-26	1309-CPR-0421
KFV Karl Fliether GmbH	HEWI marking: VE 30-26	0432-CPR-00048-01
SAG Schulte AG	HEWI marking: VE 30-26	0432-CPR-00154-01
Wilka Schließtechnik GmbH	HEWI marking: VE 30-26	0432-CPR-00005-02
Grundmann Beschlagtechnik GmbH	HEWI marking: VE 30-26	on request
WSS Wilh. Schlechtendahl & Söhne GmbH & CO.KG	HEWI marking: VE 30-26	1309-CPR-0303 0432-CPR-000037-01
ECO Schulte GmbH & Co. KG	HEWI marking: VE 30-26	0432-CPR-00099-01
GEZE	HEWI marking: VE 30-26	0757-CPR-229PANIK-7013137-5-5
Roto Frank Austria GmbH	HEWI marking: VE 30-26	0432-CPR-00272-01
Glutz AG	HEWI marking: VE 30-26	0757-CPR-229P-6014391-1-2