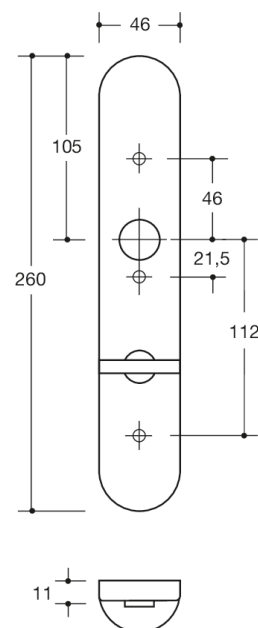


Similar picture



Dimensions in mm

### Properties

WC Backplate, long

short stems, in R-technology made of polyamide, solid colour, high-gloss surface, and for handle diameter 23 mm. Backplate substructure made of synthetic material-stainless steel composite, can be used for left and right-hand opening doors. Concealed, non-loosening screwed joint with M4 screw and sleeve combination as well as the pivot disappearing into the door leaf. WC version with emergency opening by means of square spindle or coin and occupancy disc (red/white indicator) on the outside (long stems). turnknob on the inside (short stems).

Backplate cap 45 x 26 mm, 10.5 mm high, flat, 1.5 mm wall thickness.

Supplied without screws

### Colours / Surfaces

|  |                   |
|--|-------------------|
|  | 99 (pure white)   |
|  | 98 (signal white) |
|  | 97 (light grey)   |
|  | 95 (stone grey)   |

|  |                      |
|--|----------------------|
|  | 92 (anthracite grey) |
|  | 90 (jet black)       |
|  | 50 (steel blue)      |
|  | 33 (ruby red)        |

|  |                     |
|--|---------------------|
|  | 18 (mustard yellow) |
|--|---------------------|