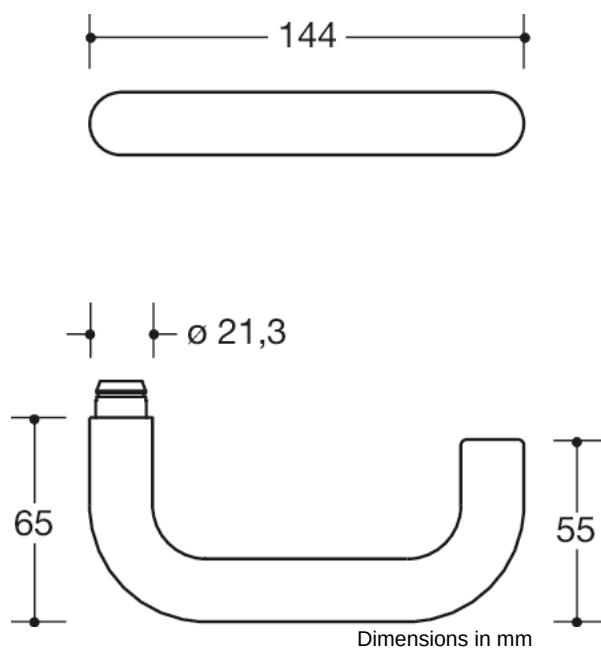


Similar picture



### Properties

Pair of levers in H-technology

Lever handle Design 111X... made of stainless steel tube (1.4301) diameter 21.3. mm, with stepped shoulder guide, groove and grubscrew M5 x 8. Installed by simply latching the lever handle into the base parts.

The lever handle meets the standards of EN 179 and DIN 18040.

Surface satin finished. With square spindle 8, 8.5, 9 or 10/8 mm stepped. Compatible with the following roses and backplates:

305.21XAH, 315.21XAH, 219.21XAH, 230.21XAH, 219.21XAHNR, 230.21XAHNR

Sustainability: EPD Environmental Product Declaration

### Awards



### Certificates

