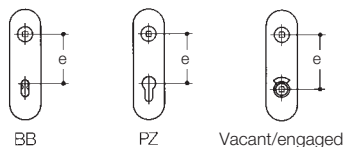


Specific information



Keyways / distances

Measure the distance for locks and fittings.

The following distances are standard:

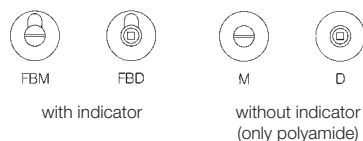
BB = Lever key $e = 72$ mm for inside and corridor doors

PZ = Euro cylinder $e = 72$ mm for inside and corridor doors
or 92 mm for entrance doors

Vacant/engaged $e = 78$ mm

Other centres and distances upon request.

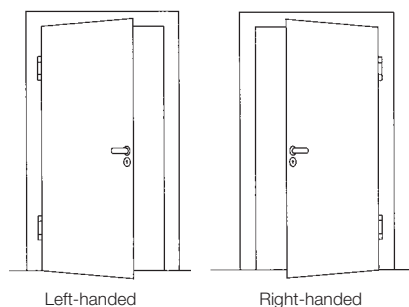
Distance details are not required when ordering rose fittings or specifying them for tender.



Emergency opening types for bathroom toilet locks

FBM and M can be opened with coins, FBD and D with a square key.

HEWI delivers FBM as standard.

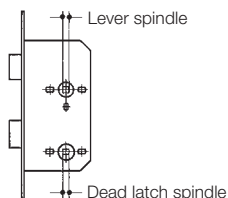


Left-handed or right-handed for door fittings

Lever handles with knob 138 and Range 270:

Lever handles are left-handed or right-handed (depends on opening direction of the door).

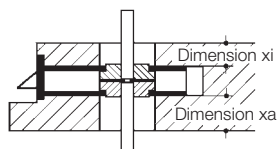
Right-handed means that the end of the lever points to the right.



Latch and dead bolt operation

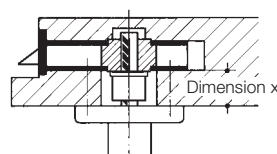
Lever spindles available: 7, 8, 8,5, 9 and reduced 10 to 8 mm.

Bolt spindle for bathroom or toilet door locks 7 or 8 mm.



Dimension "x inside" and "x outside"

for fire door fitting with split spindle



Dimension "x"

for half fittings

Ordering information

- **Item number**
- **Surface**
for stainless steel products
- **Colour**
for polyamide products
- **Keyway or emergency release**
for vacant/engaged fittings (see left)
- **Dimension x**
for half fittings (explanation see below)
- **Dimension "x inside", dimension "x outside"**
for anti-panic fire door fittings (explanation see below)
- **Distance**
when using backplates (standard dimensions see right)
- **Left-handed or right-handed**
- **Lever spindle**
- **Door thickness**

Standard configuration: Stainless steel | Polyamide

In so far as only the item number is provided when ordering, we assume the following standard configuration is required:

- | | | | | |
|----------------------------|-------------------------|------------------------|------------------------------|---|
| 1. Standard door fittings: | door thickness = 40 mm, | square spindle = 8 mm, | keyway PZ, | distance = 72 mm for backplate fittings |
| 2. Fire door fittings: | door thickness = 48 mm, | square spindle = 9 mm, | keyway PZ, | distance = 72 mm for backplate fittings |
| 3. Vacant/engaged fitting: | door thickness = 40 mm, | square spindle = 8 mm, | emergency release with coin, | distance = 78 mm for backplate fittings |