


BACKREST RAILS

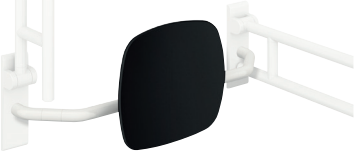
STATIONARY HINGED SUPPORT RAILS

NECESSARY FOR ALL




**801.51.906... / 801.51B906...**

- c to c 650-750 mm adjustable on site
- 150 mm deep
- double-sided mounting
- backrest made of synthetic material in HEWI colours 98 (signal white), 92 (anthracite grey) and 90 (jet black)
- rails made of glossy polyamide in 14 HEWI colours or matt polyamide in 5 HEWI colours




**801.51.907... / 801.51B907...**

- do.
- 230 mm deep



**801.51.926...R | 801.51B926R...  
801.51.926...L | 801.51B926L...**

- c to c 650-750 mm adjustable on site
- 150 mm deep
- one-sided installation
- backrest made of synthetic material in HEWI colours 98 (signal white), 92 (anthracite grey) and 90 (jet black)
- rails made of glossy polyamide in 14 HEWI colours or matt polyamide in 5 HEWI colours



**801.51.927...R | 801.51B927R...  
801.51.927...L | 801.51B927L...**

- do.
- 230 mm deep

**Polyamide** CE



**801.50.2...  
801.50.1... | rotatable**      **801.50D2...  
801.50D1... | rotatable**



**801.50.2...1  
801.50.1...1 | rotatable**      **801.50.2...4S  
801.50.1...4S | rotatable**

---

**Polyamide, matt edition** CE



**801.50B2...0  
801.50B1...0 | rotatable**



**801.50B2...1  
801.50B1...1 | rotatable**      **801.50B2...4S  
801.50B1...4S | rotatable**

**BM10.2.1 (on both sides)  
BM10.2.2 (one-sided)**  
For fixing on walls made of concrete (> C20/C25)  
National technical approval number: ETA-11/0493

**BM11.2.1 (on both sides)  
BM11.2.2 (one-sided)**  
For fixing on walls

**with mesh sleeve ø 18 mm**

- hollow concrete block
- vertically perforated bricks
- hollow lightweight concrete block
- lightweight aggregate concrete with open structure

**without mesh sleeve**

- solid bricks
- perforated calcium silicate block

**with mesh sleeve ø 22 mm**

- autoclaved aerated concrete (> P2)

**BM12.2.1 (on both sides)  
BM12.2.2 (one-sided)**  
lightweight walls with rear lining made of laminated timber boards (with waterproof bonding, at least 30 mm thick required, e.g. studs or pre wall installation)

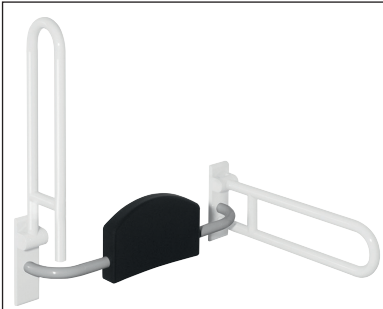
**BM13.2.1 (on both sides)  
BM13.2.2 (one-sided)**  
lightweight walls with integrated steel plates (e.g. studs or pre wall installation)

Backrest rail cannot be combined with mobile versions.

BACKREST RAILS

HINGED SUPPORT RAILS

NECESSARY FOR ALL



**801.51.900**

- c to c 670-730 mm adjustable on site
- 150 mm deep
- double-sided mounting
- padding made of black PUR
- rails made of glossy polyamide in 14 HEWI colours

**801.51B900**

- rails made of matt polyamide in 5 HEWI colours

⊕ **801.51D900**

- rails made of glossy polyamide in HEWI colour 98 (signal white), with active antimicrobial microsilver



**801.51.920R (right)**  
**801.51.920L (left)**

- c to c 670-730 mm adjustable on site
- 150 mm deep
- one-sided installation
- padding made of black PUR
- rails made of glossy polyamide in 14 HEWI colours

**801.51B920R (right)**  
**801.51B920L (left)**

- rails made of matt polyamide in 5 HEWI colours

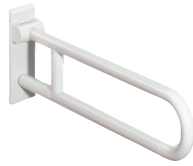
⊕ **801.51D920R (right)**

⊕ **801.51D920L (left)**

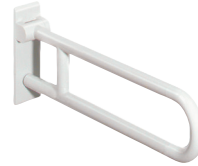
- rails made of glossy polyamide in HEWI colour 98 (signal white), with active antimicrobial microsilver



Polyamide



**801.50.2...0**  
**801.50.1...0 | rotatable**



⊕ **801.50D2...0**  
⊕ **801.50D1...0 | rotatable**



**801.50.2...1**  
**801.50.1...1 | rotatable**



**801.50.2...4S**  
**801.50.1...4S | rotatable**

Polyamide, matt edition



**801.50B2...0**  
**801.50B1...0 | rotatable**



**801.50B2...1**  
**801.50B1...1 | rotatable**



**801.50B2...4S**  
**801.50B1...4S | rotatable**



**BM10.2.1 (on both sides)**  
**BM10.2.2 (one-sided)**

- For fixing on walls made of concrete (> C20/C25)
- National technical approval number: ETA-11/0493

**BM11.2.1 (on both sides)**  
**BM11.2.2 (one-sided)**

- For fixing on walls

**with mesh sleeve ø 18 mm**

- hollow concrete block
- vertically perforated bricks
- hollow lightweight concrete block
- lightweight aggregate concrete with open structure

**without mesh sleeve**

- solid bricks
- perforated calcium silicate block

**with mesh sleeve ø 22 mm**

- autoclaved aerated concrete (> P2)

**BM12.2.1 (on both sides)**  
**BM12.2.2 (one-sided)**

- lightweight walls with rear lining made of laminated timber boards (with waterproof bonding, at least 30 mm thick required, e.g. studs or pre wall installation)



**BM13.2.1 (on both sides)**  
**BM13.2.2 (one-sided)**

- lightweight walls with integrated steel plates (e.g. studs or pre wall installation)