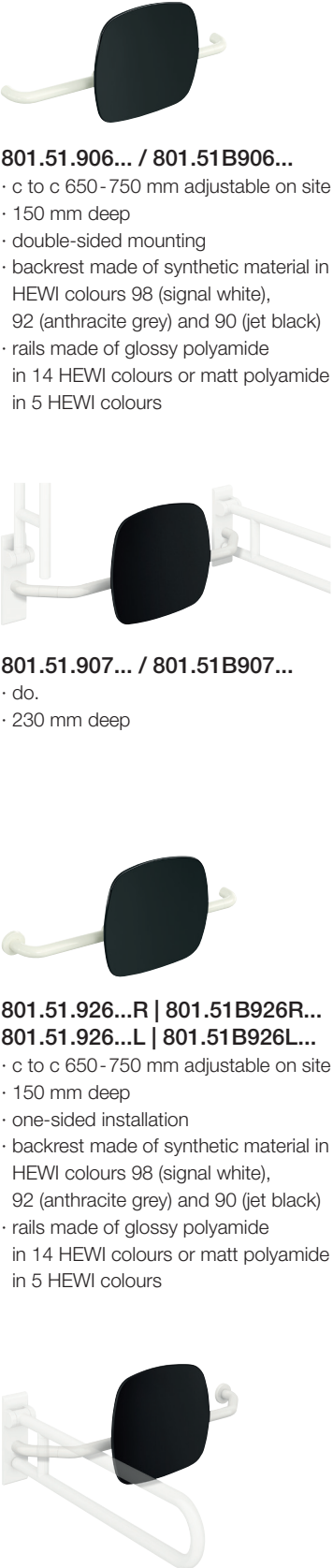


BACKREST RAILS

STATIONARY HINGED SUPPORT RAILS

NECESSARY FOR ALL



801.51.906... / 801.51B906...

- c to c 650 - 750 mm adjustable on site
- 150 mm deep
- double-sided mounting
- backrest made of synthetic material in HEWI colours 98 (signal white), 92 (anthracite grey) and 90 (jet black)
- rails made of glossy polyamide in 14 HEWI colours or matt polyamide in 5 HEWI colours

801.51.907... / 801.51B907...

- do.
- 230 mm deep


**801.51.926...R | 801.51B926R...
801.51.926...L | 801.51B926L...**

- c to c 650 - 750 mm adjustable on site
- 150 mm deep
- one-sided installation
- backrest made of synthetic material in HEWI colours 98 (signal white), 92 (anthracite grey) and 90 (jet black)
- rails made of glossy polyamide in 14 HEWI colours or matt polyamide in 5 HEWI colours

**801.51.927...R | 801.51B927R...
801.51.927...L | 801.51B927L...**

- do.
- 230 mm deep

Polyamide CE



801.50.2...0 ⊕ 801.50D2...0
801.50.1...0 | rotatable ⊕ 801.50D1...0 | rotatable

801.50.2...1 801.50.2...4S
801.50.1...1 | rotatable 801.50.1...4S | rotatable

Polyamide, matt edition CE



801.50B2...0
801.50B1...0 | rotatable

801.50B2...1 801.50B2...4S
801.50B1...1 | rotatable 801.50B1...4S | rotatable

BM17.2
 For fixing on walls made of concrete (> C20/C25)
 National technical approval number: ETA-11/0493
 additionally: injection mortar (HEWI item No.: 200311)
 or to be provided on site: injection mortar HIT-HY200A (Hilti), extrusion tool HDM (Hilti)

BM10.2
 For fixing on walls made of concrete (> C20/C25)

BM11.2
 For fixing on walls made of auto-claved aerated concrete (> P2)
 additionally: injection mortar (HEWI item No.: 200266), conical drill bit (HEWI item No.: 171041)
 or to be provided on site: injection mortar HIT-HY 270 (Hilti), extrusion tool HDM (Hilti), conical drill bit TE-C PB 22/100 (Hilti)

BM12.2
 For fixing on lightweight walls with rear lining made of laminated timber boards (with waterproof bonding, at least 30 mm thick required, e.g. studs or prewall installation)

BM13.2
 For fixing on lightweight walls with integrated steel plates (e.g. studs or pre wall installation)

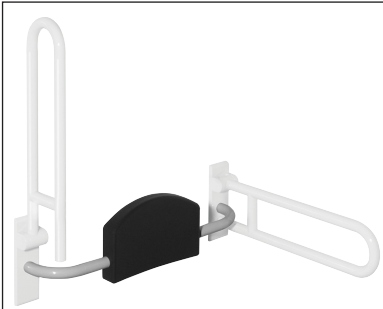
BM18.2
 For fixing on walls made of:
 · solid bricks
 · perforated calcium silicate block
 · hollow concrete block
 · vertically perforated bricks
 · hollow lightweight concrete block
 · lightweight aggregate concrete with open structure
 National technical approval number: ETA-13/1036
 additionally: injection mortar (HEWI item No.: 200266)
 or to be provided on site: injection mortar HIT-HY 270 (Hilti), extrusion tool HDM (Hilti)

Backrest rail cannot be combined with mobile versions.

BACKREST RAILS

HINGED SUPPORT RAILS

NECESSARY FOR ALL



801.51.900

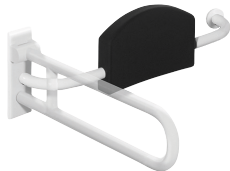
- c to c 670-730 mm adjustable on site
- 150 mm deep
- double-sided mounting
- padding made of black PUR
- rails made of glossy polyamide in 14 HEWI colours

801.51B900

- rails made of matt polyamide in 5 HEWI colours

⊕ **801.51D900**

- rails made of glossy polyamide in HEWI colour 98 (signal white), with active antimicrobial microsilver



801.51.920R (right)
801.51.920L (left)

- c to c 670-730 mm adjustable on site
- 150 mm deep
- one-sided installation
- padding made of black PUR
- rails made of glossy polyamide in 14 HEWI colours

801.51B920R (right)
801.51B920L (left)

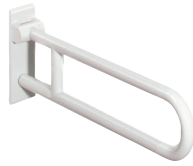
- rails made of matt polyamide in 5 HEWI colours

⊕ **801.51D920R (right)**

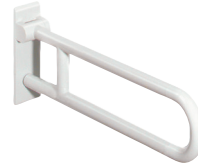
⊕ **801.51D920L (left)**

- rails made of glossy polyamide in HEWI colour 98 (signal white), with active antimicrobial microsilver

Polyamide



801.50.2...0
801.50.1...0 | rotatable



⊕ **801.50D2...0**
⊕ **801.50D1...0 | rotatable**



801.50.2...1
801.50.1...1 | rotatable



801.50.2...4S
801.50.1...4S | rotatable

Polyamide, matt edition



801.50B2...0
801.50B1...0 | rotatable



801.50B2...1
801.50B1...1 | rotatable



801.50B2...4S
801.50B1...4S | rotatable



BM10.2.1 (on both sides)
BM10.2.2 (one-sided)

For fixing on walls made of concrete (> C20/C25)
National technical approval number: ETA-11/0493

BM11.2.1 (on both sides)
BM11.2.2 (one-sided)

For fixing on walls

with mesh sleeve ø 18 mm

- hollow concrete block
- vertically perforated bricks
- hollow lightweight concrete block
- lightweight aggregate concrete with open structure

without mesh sleeve

- solid bricks
- perforated calcium silicate block

with mesh sleeve ø 22 mm

- autoclaved aerated concrete (> P2)

BM12.2.1 (on both sides)
BM12.2.2 (one-sided)

lightweight walls with rear lining made of laminated timber boards (with waterproof bonding, at least 30 mm thick required, e.g. studs or pre wall installation)



BM13.2.1 (on both sides)
BM13.2.2 (one-sided)

lightweight walls with integrated steel plates (e.g. studs or pre wall installation)