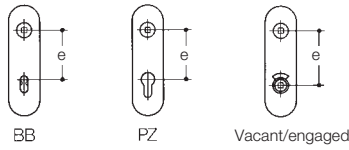


Specific information



Keyways/distances

Measure the distance for locks and fittings.

The following distances are standard:

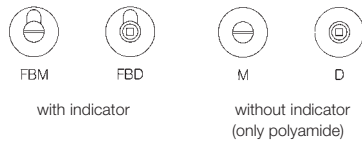
BB = Lever key e = 72 mm for inside and corridor doors

PZ = Euro cylinder e = 72 mm for inside and corridor doors
or 92 mm for entrance doors

Vacant/engaged e = 78 mm

Other centres and distances upon request.

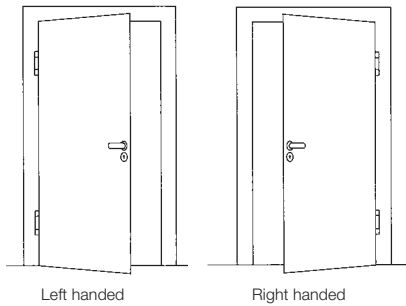
Distance details are not required when ordering rose fittings or specifying them for tender.



Emergency opening types for bathroom toilet locks

FBM and M can be opened with coins, FBD and D with a square key.

HEWI delivers FBM as standard.

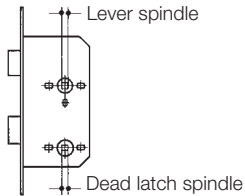


Left- or right-handed for door fittings

Lever handles with knob 138 and Range 270:

Lever handles are left or right handed (depends on opening direction of the door).

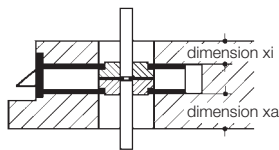
Right handed means that the end of the lever points to the right.



Latch and dead bolt operation

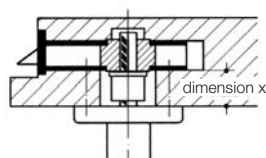
Lever spindles available: 7, 8, 8.5, 9 and reduced 10 to 8 mm.

Bolt spindle for bathroom or toilet door locks 7 or 8 mm.



Dimension "x inside" and "x outside"

for fire door fitting with split spindle



Dimension "x"

for half fittings

Ordering information

- **Item number**
- **Surface**
for stainless steel products
- **Colour**
for polyamide products
- **Keyway or emergency release**
for vacant/engaged fittings (see left)
- **Dimension x**
for half fittings (explanation see below)
- **Dimension x inside, dimension x outside**
for anti-panic fire door fittings (explanation see below)
- **Distance**
when using backplates (standard dimensions see right)
- **Left- or right-handed**
- **Lever spindle**
- **Door thickness**

Standard configuration Stainless steel | Polyamide

In so far as only the item number is provided when ordering, we assume the following standard configuration is required:

1. Standard door fittings: door thickness = 40 mm, square spindle = 8 mm, keyway PZ, distance = 72 mm for backplate fittings
2. Fire door fittings: door thickness = 48 mm, square spindle = 9 mm, keyway PZ, distance = 72 mm for backplate fittings
3. Vacant/engaged fitting: door thickness = 40 mm, square spindle = 8 mm, emergency release with coin, distance = 78 mm for backplate fittings