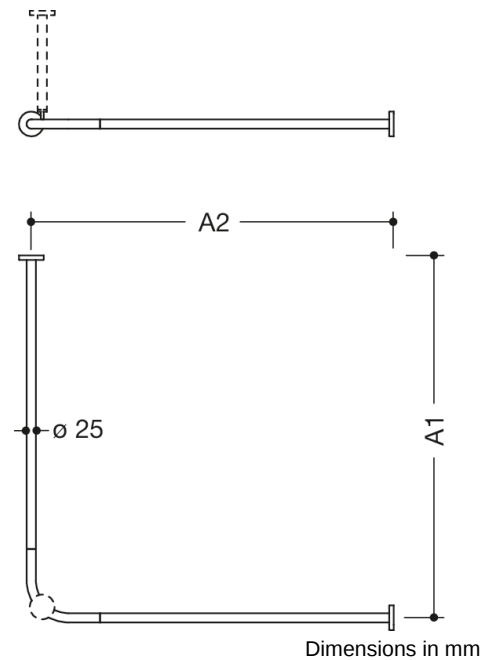




Similar picture



### Properties

Curtain rail, System 900

- horizontally arranged rails connected at right-angles, with curtain rings
- made of high-quality stainless steel, satin
- length made-to-measure from 320 mm to 1987 mm
- with a corresponding number of curtain rings made of white POM
- rail diameter 25 mm, rose diameter 70 mm
- can be shortened at the ends on site to 320 mm
- fixing with roses to wall and ceiling, ceiling support required
- including non-corrosive and tested HEWI fixing material and sealing tape for sealing the drilling points

### Awards

