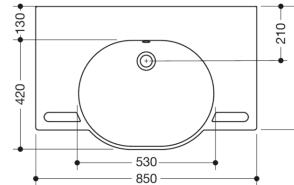


*depending on the siphon used



Dimensions in mm

Properties

Washbasin

- made of mineral composite with non-porous surface, alpine white
- with shelf and oval basin
- integrated gripping feature, can be used as a towel holder
- includes overflow with rose and cover
- the overflow can be replaced and renewed if necessary
- overflow is mounted between drain and siphon under the washbasin, h=25 mm, $\varnothing=70$ mm
- for wall-mounted fittings
- wheelchair accessible to DIN 18040 and ÖNORM B1600/1601
- weight capacity to EN 14688
- 850 mm wide and 550 mm deep
- wash trough depth 110 mm
- for hanger bolt fixing
- CE marking according to Construction Products Regulation No. 305/2011