

### CLOAKROOMS

This index includes cloakroom rails with varying hook shapes, wall hooks, clothes hangers and pictograms.

These products have been designed specifically for use in public areas and therefore take into account in particular the high demands of nurseries, schools, hospitals, doctors' surgeries etc.

### PLANNING

Clear and comprehensible tables allow for an easy match-up available space requirements and the HEWI product range.

### DELIVERY

HEWI supplies pre-assembled components, coat and towel rails up to a max. length of 2.70 m.

### MOUNTING

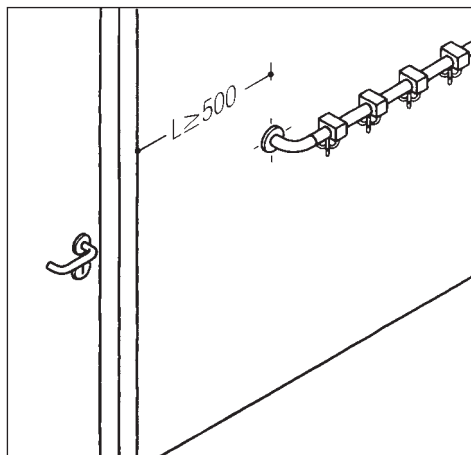
Wall-mounted cloak rails are easily installed via plug connection.

### HOOK DISTANCES

The following standard applies to HEWI products:

200 mm for benches and cloak rails with hat shelf and 150 mm for coat and towel rails.

If in doubt, distances should be agreed with the local planning authorities.



### RECOMMENDED INSTALLATION HEIGHT A FOR CLOAK RAILS

Kindergarten	1200 ± 100 mm
Primary school	1400 ± 100 mm
Secondary school	1600 ± 100 mm

### RECOMMENDED INSTALLATION HEIGHT A FOR WASHROOMS

Kindergarten	900 ± 100 mm
--------------	--------------



### SAFETY

Cloakrooms must be designed in such a way as to exclude in as far as is possible the risk of injury. Rounded elements and enclosed fixtures reduce the risk of injury. HEWI cloakrooms fulfil these conditions and are tested for enhanced requirements in nurseries or schools according to GS (certified safety standards) in accordance with current regulations.