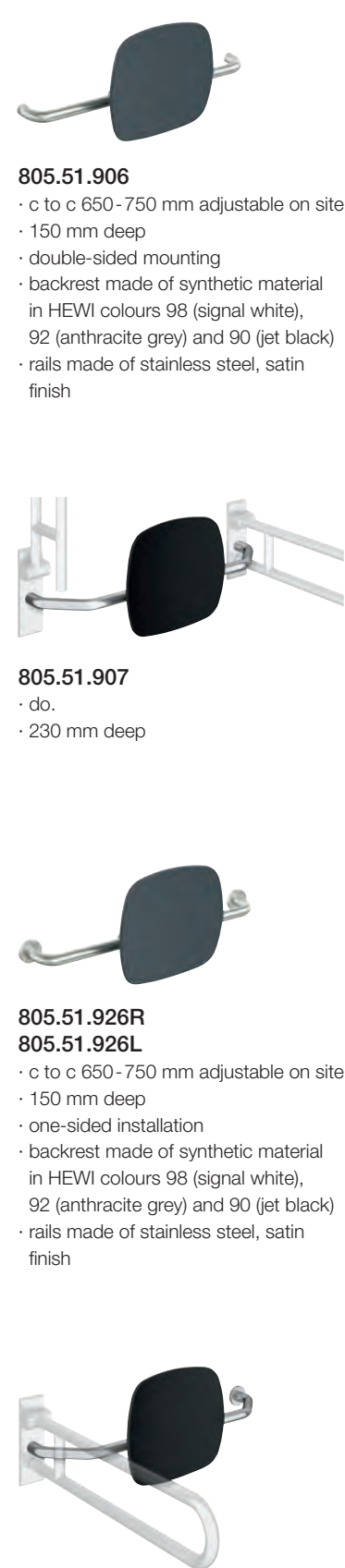


BACKREST RAIL

STATIONARY HINGED SUPPORT RAILS

NECESSARY FOR ALL



805.51.906
 · c to c 650 - 750 mm adjustable on site
 · 150 mm deep
 · double-sided mounting
 · backrest made of synthetic material in HEWI colours 98 (signal white), 92 (anthracite grey) and 90 (jet black)
 · rails made of stainless steel, satin finish

805.51.907
 · do.
 · 230 mm deep

805.51.926R
805.51.926L
 · c to c 650 - 750 mm adjustable on site
 · 150 mm deep
 · one-sided installation
 · backrest made of synthetic material in HEWI colours 98 (signal white), 92 (anthracite grey) and 90 (jet black)
 · rails made of stainless steel, satin finish

805.51.927R
805.51.927L
 · do.
 · 230 mm deep

+

Stainless steel, satin finish CE



805.50.2...0
805.50.1...0 | rotatable

+

BM17.2
 For fixing on walls made of concrete (> C20/C25)
 National technical approval number: ETA-11/0493
 additionally: injection mortar (HEWI item No.: 200311)
 or to be provided on site: injection mortar HIT-HY200A (Hilti)
 extrusion tool HDM (Hilti)

BM10.2
 For fixing on walls made of concrete (> C20/C25)

BM11.2
 For fixing on walls made of concrete (> P2)
 additionally:
 injection mortar (HEWI item No.: 200266),
 conical drill bit (HEWI item No.: 171041)
 or to be provided on site:
 injection mortar HIT-HY 270 (Hilti),
 extrusion tool HDM (Hilti),
 conical drill bit TE-C PB 22/100 (Hilti)

BM12.2
 For fixing on lightweight walls with rear lining made of laminated timber boards (with waterproof bonding, at least 30 mm thick required, e.g. studs or prewall installation)

BM13.2
 For fixing on lightweight walls with integrated steel plates (e.g. studs or pre wall installation)

BM18.2
 For fixing on walls made of:
 · solid bricks
 · perforated calcium silicate block
 · hollow concrete block
 · vertically perforated bricks
 · hollow lightweight concrete block
 · lightweight aggregate concrete with open structure
 National technical approval number: ETA-13/1036
 additionally:
 injection mortar (HEWI item No.: 200266)
 or to be provided on site:
 injection mortar HIT-HY 270 (Hilti),
 extrusion tool HDM (Hilti)

Backrest rail cannot be combined with mobile versions.

BACKREST RAIL

STATIONARY HINGED SUPPORT RAILS

NECESSARY FOR ALL



805.51.900

- c to c 670-730 mm adjustable on site
- 150 mm deep
- double-sided mounting
- padding made of black PUR
- rails made of stainless steel, satin finish

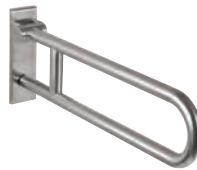


805.51.920R (right)
805.51.920L (left)

- c to c 670-730 mm adjustable on site
- 150 mm deep
- one-sided installation
- padding made of black PUR
- rails made of stainless steel, satin finish



Stainless steel, satin finish



805.50.2...0
805.50.1...0 | rotatable



BM10.2.1 (on both sides)
BM10.2.2 (one-sided)

For fixing on walls made of concrete (> C20/C25)
National technical approval number: ETA-11/0493

BM11.2.1 (on both sides)
BM11.2.2 (one-sided)

For fixing on walls

with mesh sleeve ø 18 mm

- hollow concrete block
- vertically perforated bricks
- hollow lightweight concrete block
- lightweight aggregate concrete with open structure

without mesh sleeve

- solid bricks
- perforated calcium silicate block

with mesh sleeve ø 22 mm

- autoclaved aerated concrete (> P2)

BM12.2.1 (on both sides)
BM12.2.2 (one-sided)

lightweight walls with rear lining made of laminated timber boards (with waterproof bonding, at least 30 mm thick required, e.g. studs or pre wall installation)

BM13.2.1 (on both sides)
BM13.2.2 (one-sided)

lightweight walls with integrated steel plates (e.g. studs or pre wall installation)