

**BACKREST RAIL**
**STATIONARY HINGED SUPPORT RAILS**
**NECESSARY FOR ALL**

**805.51.906**

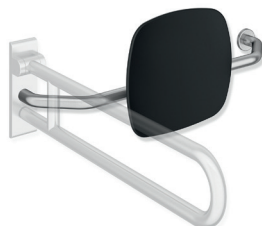
- c to c 650 - 750 mm adjustable on site
- 150 mm deep
- double-sided mounting
- backrest made of synthetic material in HEWI colours 98 (signal white), 92 (anthracite grey) and 90 (jet black)
- rails made of stainless steel, satin finish


**805.51.907**

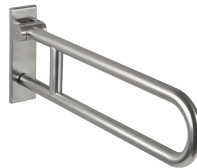
- do.
- 230 mm deep


**805.51.926R**
**805.51.926L**

- c to c 650 - 750 mm adjustable on site
- 150 mm deep
- one-sided installation
- backrest made of synthetic material in HEWI colours 98 (signal white), 92 (anthracite grey) and 90 (jet black)
- rails made of stainless steel, satin finish


**805.51.927R**
**805.51.927L**

- do.
- 230 mm deep


**Stainless steel, satin finish**

**805.50.2...0**
**805.50.1...0 | rotatable**

**BM17.2**

For fixing on walls made of concrete (> C20/C25)  
National technical approval number: ETA-11/0493

additionally: injection mortar (HEWI item No.: 200311)  
or to be provided on site: injection mortar HIT-HY200A (Hilti)  
extrusion tool HDM (Hilti)

**BM10.2**

For fixing on walls made of concrete (> C20/C25)

**BM11.2**

For fixing on walls made of concrete (> P2)

additionally:  
injection mortar (HEWI item No.: 200266),  
conical drill bit (HEWI item No.: 171041)  
or to be provided on site:  
injection mortar HIT-HY 270 (Hilti),  
extrusion tool HDM (Hilti),  
conical drill bit TE-C PB 22/100 (Hilti)

**BM12.2**

For fixing on lightweight walls with rear lining made of laminated timber boards (with waterproof bonding, at least 30 mm thick required, e.g. studs or prewall installation)

**BM13.2**

For fixing on lightweight walls with integrated steel plates (e.g. studs or pre wall installation)

**BM18.2**

For fixing on walls made of:

- solid bricks
- perforated calcium silicate block
- hollow concrete block
- vertically perforated bricks
- hollow lightweight concrete block
- lightweight aggregate concrete with open structure

National technical approval number: ETA-13/1036

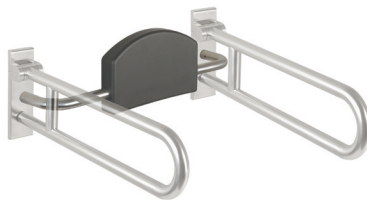
additionally:  
injection mortar (HEWI item No.: 200266)  
or to be provided on site:  
injection mortar HIT-HY 270 (Hilti),  
extrusion tool HDM (Hilti)

**Backrest rail cannot be combined with mobile versions.**

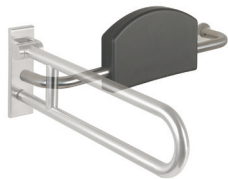
**BACKREST RAIL**

**STATIONARY HINGED SUPPORT RAILS**

**NECESSARY FOR ALL**



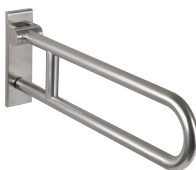
**805.51.900**  
· c to c 670-730 mm adjustable on site  
· 150 mm deep  
· double-sided mounting  
· padding made of black PUR  
· rails made of stainless steel, satin finish



**805.51.920R (right)**  
**805.51.920L (left)**  
· c to c 670-730 mm adjustable on site  
· 150 mm deep  
· one-sided installation  
· padding made of black PUR  
· rails made of stainless steel, satin finish



**Stainless steel, satin finish**



**805.50.2...0**  
**805.50.1...0 | rotatable**



**BM10.2.1 (on both sides)**  
**BM10.2.2 (one-sided)**

For fixing on walls made of concrete (> C20/C25)  
National technical approval number: ETA-11/0493

**BM11.2.1 (on both sides)**  
**BM11.2.2 (one-sided)**

For fixing on walls

**with mesh sleeve ø 18 mm**

- hollow concrete block
- vertically perforated bricks
- hollow lightweight concrete block
- lightweight aggregate concrete with open structure

**without mesh sleeve**

- solid bricks
- perforated calcium silicate block

**with mesh sleeve ø 22 mm**

- autoclaved aerated concrete (> P2)

**BM12.2.1 (on both sides)**  
**BM12.2.2 (one-sided)**

lightweight walls with rear lining made of laminated timber boards (with waterproof bonding, at least 30 mm thick required, e.g. studs or pre wall installation)

**BM13.2.1 (on both sides)**  
**BM13.2.2 (one-sided)**

lightweight walls with integrated steel plates (e.g. studs or pre wall installation)