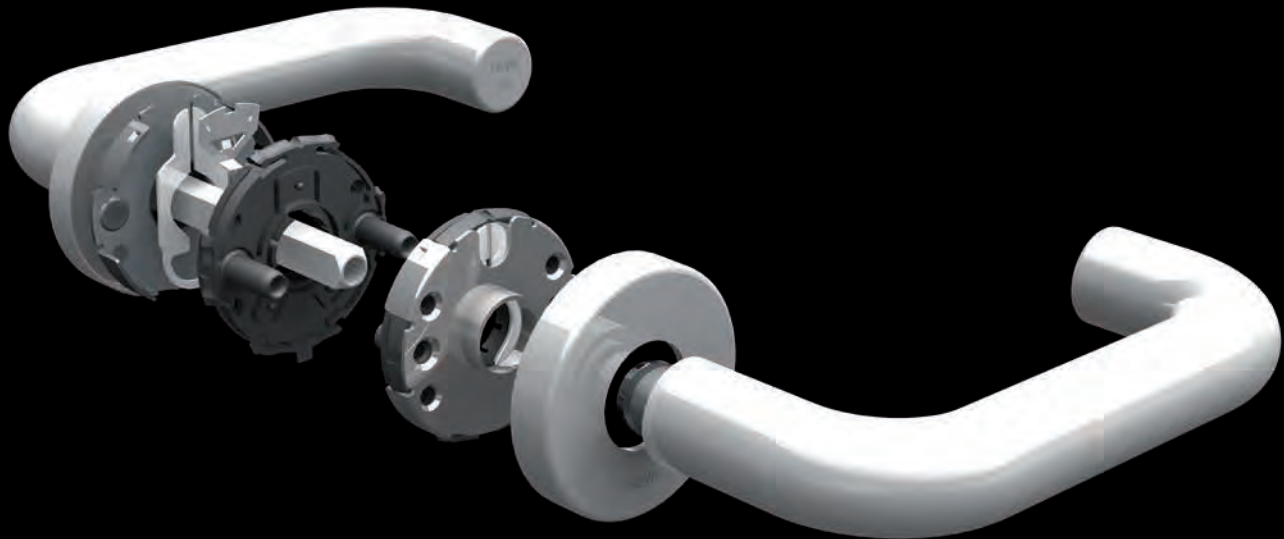


Technical information

Standards and ordering information

TECHNICAL INFORMATION

Overview lever handles	254 – 255
Overview components	256 – 259
Technical information components	260
Ordering information Standard configuration lever handles	261
DIN standards	262 – 270
Information on glass door fittings	271
Technologies	272 – 279
Classification of item numbers	280 – 281



BICOLOR POLYAMIDE | MATT EDITION



Model 111.23P...
pages 14, 16



Model 162.21P...
pages 18, 20



Model 251.21PB
pages 22, 98, 144

MINI POLYAMIDE | MATT EDITION



Model 111.23P...M
pages 34, 36, 37



Model 162.21P...M
pages 38, 40, 42



Model 251.21PBM
pages 42, 43, 146, 147

SYSTEM 111 POLYAMIDE | MATT EDITION



Model 111...
pages 112, 118



Model 111.23...
pages 114, 120



Model 114.23...
pages 116, 121



Model 115.23
page 117

SYSTEM 162 POLYAMIDE | MATT EDITION



Model 162.21P...
page 130, 134



Model 165.21P...
page 132, 136



Model 166.21P...
page 133, 137

KNOBS POLYAMIDE | MATT EDITION



Model 122.23...
page 123



Model 123.23...
page 169



Model 138...
pages 169, 189

KNOB HALF FITTINGS



Model 105X
page 177



Model 106X
pages 178, 192



Model 107X
page 178



Model 108X
pages 177, 192



Model 109X
page 177



New
Model 275X
page 179



New
Model 276X
pages 179, 193

MINI STAINLESS STEEL



Model 111XAM
page 35



Model 162XAM
page 39

MINI RANGE 270



Model 271XAM
page 44



New
Model 271XPM
page 45

BICOLOR RANGE 270



New
Model 271XP
page 24

SYSTEM 100



Model 101XA
page 52



New
Model 101XP
page 52



Model 103X
page 54



Model 104X
page 55

SYSTEM 111



Model 111X
page 62



Model 112X
page 64



Model 113X
page 65

SYSTEM 162



Model 162X
page 72



Model 165X
page 74



Model 166X
page 75

RANGE 170



Model 173X
page 82



Model 174X
page 83

RANGE 180



Model 185X
page 90

WITH GLASS



Model 185XO
page 92

RANGE 270



New
Model 271XA
page 100



New
Model 272XA
page 101

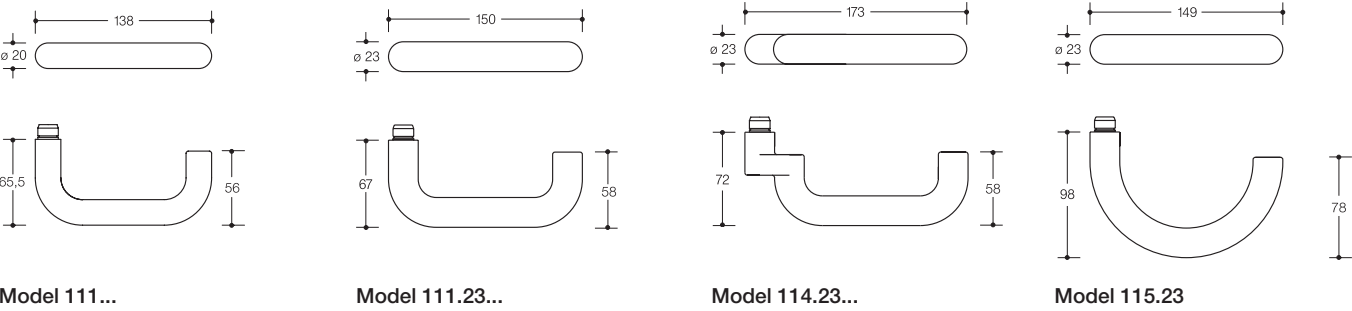


New
Model 273XA
page 102

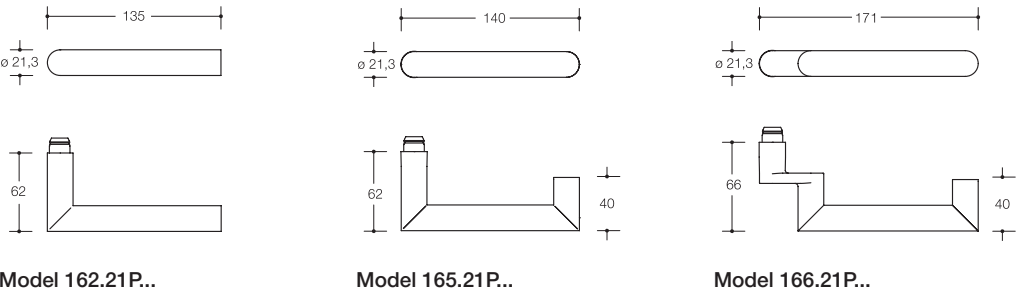


New
Model 274XA
page 103

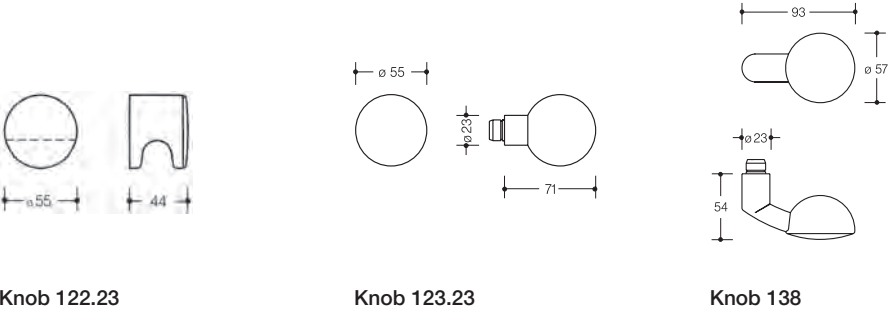
LEVER HANDLES SYSTEM 111



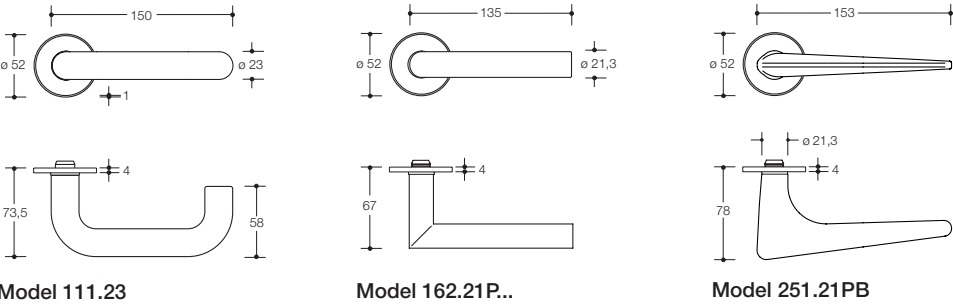
LEVER HANDLES SYSTEM 162



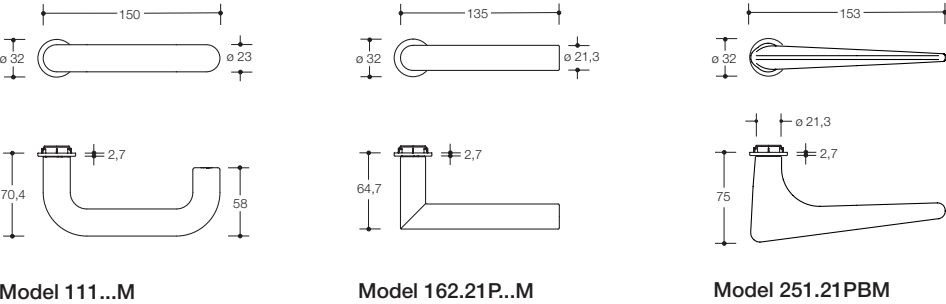
KNOBS



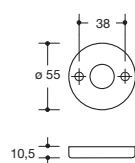
BICOLOR



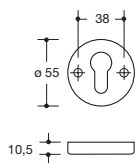
MINI



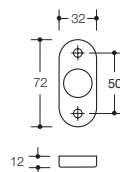
ROSES



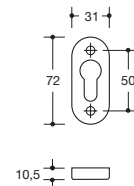
Rose 305...



Escutcheon 306...

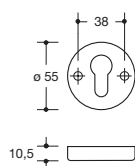


Rose 315...

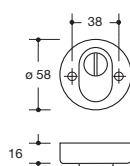


Escutcheon 316...

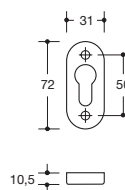
SECURITY ESCUTCHEONS



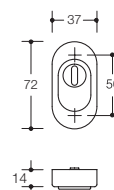
Security escutcheon 306...



Security escutcheon with
cylinder cover 306...Z...

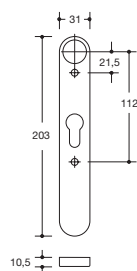


Security escutcheon 316...

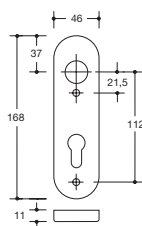


Security escutcheon with
cylinder cover 316...Z...

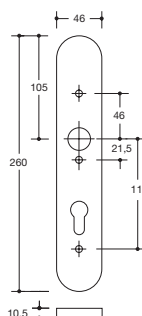
BACKPLATES



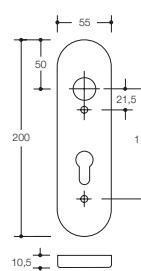
Backplate 217...



Backplate 230...



Backplate 235...

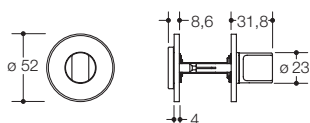


Backplate 285...

ROSES BICOLOR

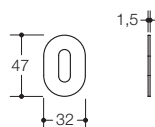


Escutcheon
306.23..I...

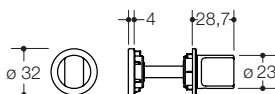


Rose with turn knob
306..INR

ROSES MINI

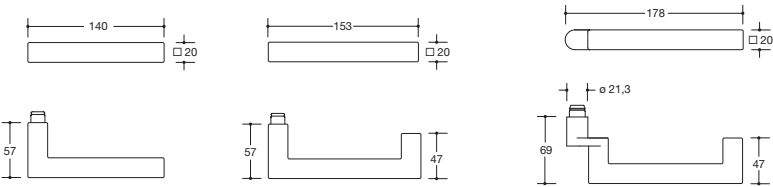


Escutcheon
306P..M...



Rose with turn knob
306P..MNR

LEVER HANDLES SYSTEM 100

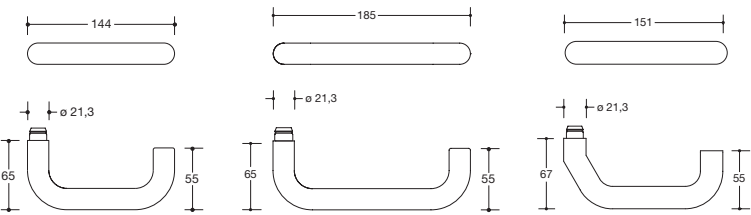


Model 101X

Model 103X

Model 104X

LEVER HANDLES SYSTEM 111

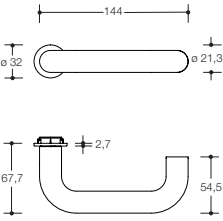


Model 111X

Model 112X

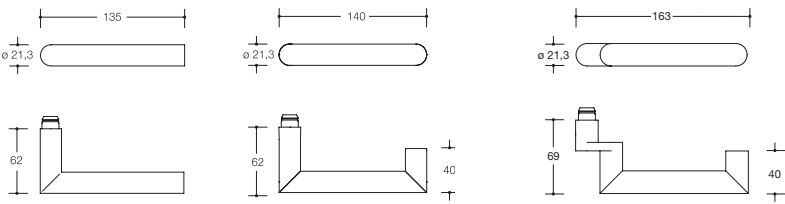
Model 113X

SYSTEM 111 MINI



Model 111XAM

LEVER HANDLES SYSTEM 162

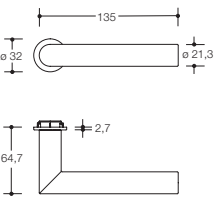


Model 162X

Model 165X

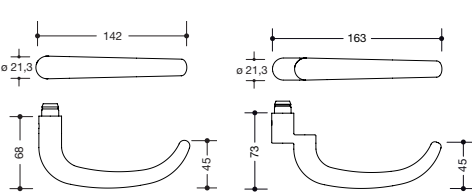
Model 166X

SYSTEM 162 MINI



Model 162XAM

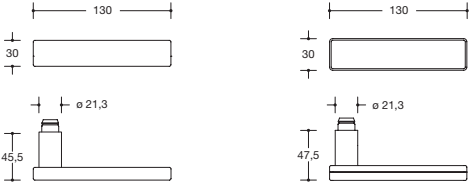
LEVER HANDLES RANGE 170



Model 173X

Model 174X

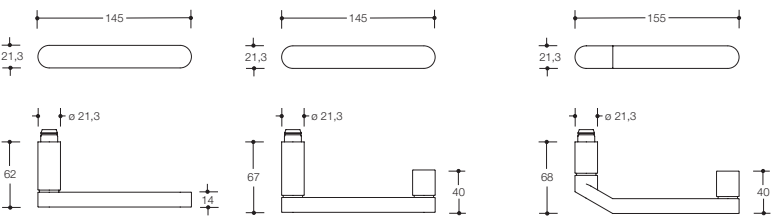
LEVER HANDLES RANGE 180



Model 185X

Model 185XO

LEVER HANDLES RANGE 270

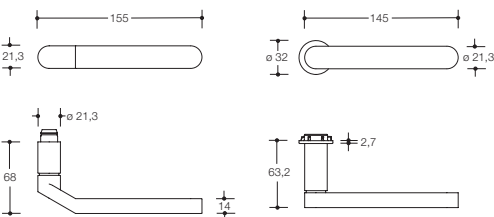


New
 Model 271X

New
 Model 272X

New
 Model 273X

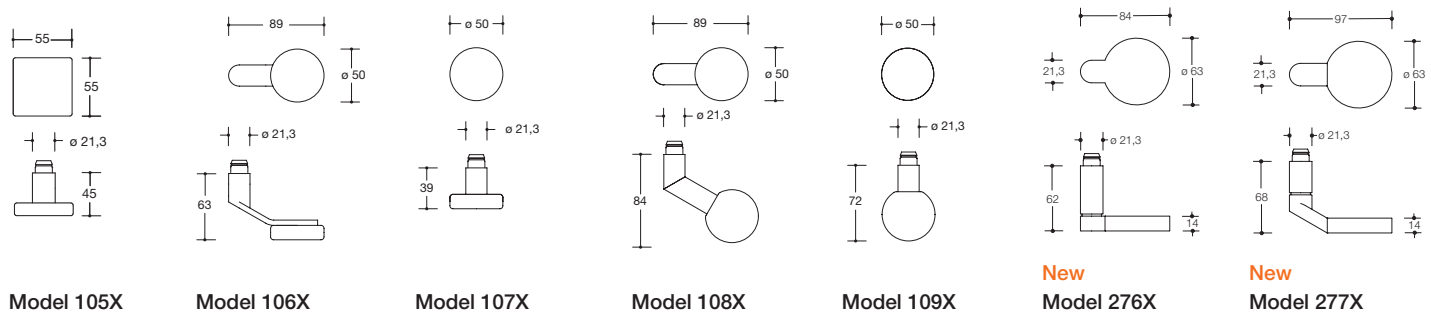
RANGE 270 MINI



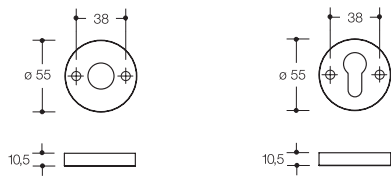
New
 Model 274X

Model 270X..M

KNOBS



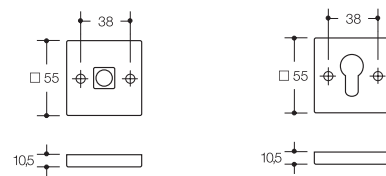
ROSES ROUND



Rose
305...X..

Escutcheon
306.23X..

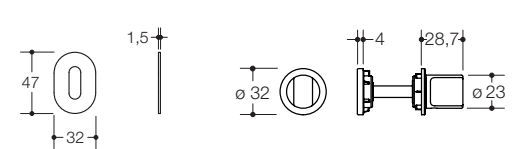
ROSES SQUARE



Rose
307..SX..

Escutcheon
308X..

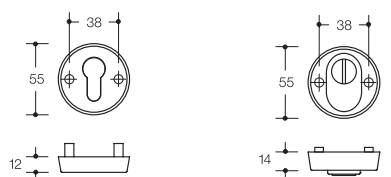
ROSES MINI



Escutcheon mini
306XAM

Rose with turn knob mini
306XAMNR

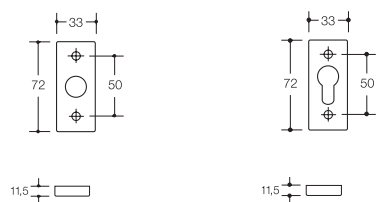
SECURITY ESCUTCHEONS ROUND



Security escutcheon
306.23X..ES...

Security escutcheon
306.23X..ESZ...

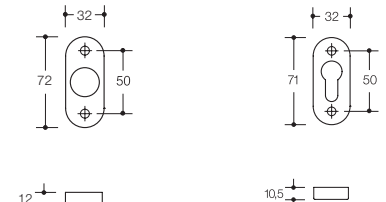
ROSES RECTANGULAR



Rose
317.21X..

Escutcheon
318X../FS

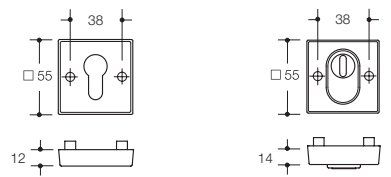
ROSES OVAL



Rose
315...X

Escutcheon
316X../FS

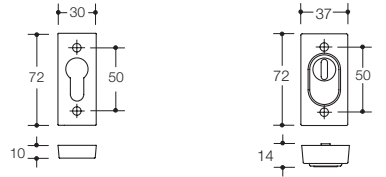
SECURITY ESCUTCHEONS SQUARE



Security escutcheon
308X..ES...

Security escutcheon
308X..ESZ...

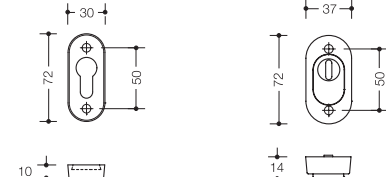
SEC. ESCUTCHEONS RECTANGULAR



Security escutcheon
318X..ES

Security escutcheon
318X..ESZ

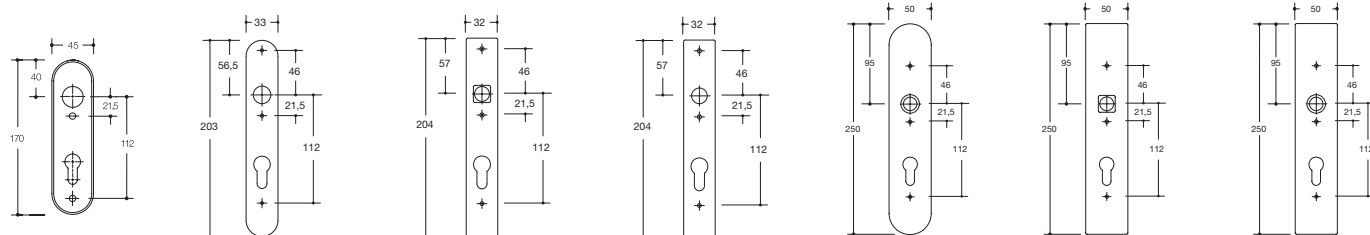
SECURITY ESCUTCHEONS OVAL



Security escutcheon
316X..ES...

Security escutcheon
316X..ESZ

BACKPLATES



Backplate
230...X..

Backplate
219.21X..H

Backplate
220.20SX..

Backplate
220.21X..

Backplate
235.21X..

Backplate
236.20SX..

Backplate
236.21X..

Interior doors (Massive doors)

Standard door fitting

Required components

Component	Quantity
Female parts	2 pieces
Lever roses H/R-technology	1 pair
Escutcheons	1 pair
Alt. backplates H/R-technology	1 pair
Spindle 69.6B H-technology	1 piece
Spindle 60.9R R-technology	1 piece

Vacant/engaged fitting

Required components

Component	Quantity
Female parts	2 pieces
Lever roses H/R-technology	1 pair
Vacant/engaged roses	1 pair
Alt. vacant/engaged backpl. H/R-tech.	1 pair
Spindle 69.6B H-technology	1 piece
Spindle 60.9R R-technology	1 piece

Apartment door fitting

Required components

Component	Quantity
Female part	1 piece
Knob, female part square 9 mm	1 piece
Lever roses H/R-technology	1 pair
Escutcheons	1 pair
Alt. backplates H/R-technology	1 pair
Spindle 79.6B H-technology	1 piece
Spindle 70.9R R-technology	1 piece

Half fitting

Required components

Component	Quantity
Female part	1 piece
Lever roses H/R-technology	1 piece
Escutcheons	1 pair
Alternative backplates	1 piece
Spindle 72.7B H-technology	1 piece
Spindle 72.9R R-technology	1 piece

Fire and smoke protective doors

Fire door fitting

Required components

Component	Quantity
Female parts square 9 mm	2 pieces
Lever roses H/R-technology	1 pair
Fire protective escutcheons	1 pair
Alternative fire protective backplate	1 pair
Spindle 69.6B H-technology	1 piece
Spindle 60.9R R-technology	1 piece

Fire door fitting with split spindle

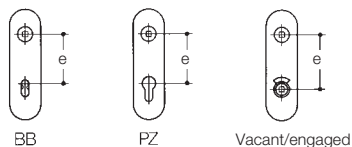
Required components

Component	Quantity
Female parts square 9 mm	2 pieces
Lever roses H/R-technology	1 pair
Fire protective escutcheons	1 pair
Alt. fire protec. backplate H/R-tech.	1 pair
Spindle 72.3R H/R-technology	1 piece

Apartment fire door fitting

Required components

Component	Quantity
Female part square 9 mm	1 piece
Knob, female part square 9 mm	1 piece
Lever roses H/R-technology	1 pair
Fire protective escutcheons	1 pair
Alt. fire protective backplate H/R-tech.	1 pair
Spindle 79.6B H-technology	1 piece
Spindle 70.9R R-technology	1 piece



Specific information

Keyways/distances

Measure the distance for locks and fittings.

The following distances are standard:

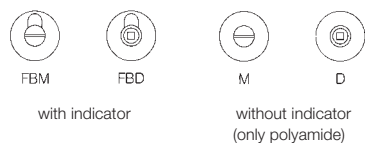
BB = Lever key $e = 72$ mm for inside and corridor doors

PZ = Euro cylinder $e = 72$ mm for inside and corridor doors
or 92 mm for entrance doors

Vacant/engaged $e = 78$ mm

Other centres and distances upon request.

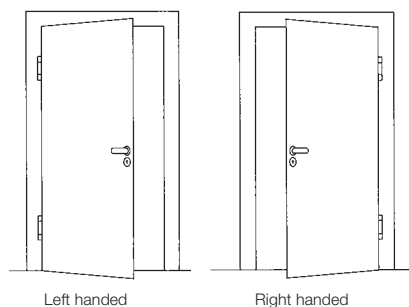
Distance details are not required when ordering rose fittings or specifying them for tender.



Emergency opening types for bathroom toilet locks

FBM and M can be opened with coins, FBD and D with a square key.

HEWI delivers FBM as standard.

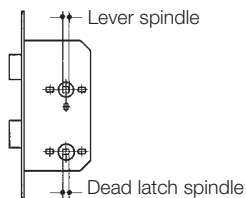


Left- or right-handed for door fittings

Lever handles with knob 138 and range 270:

Lever handles are left or right handed (depends on opening direction of the door).

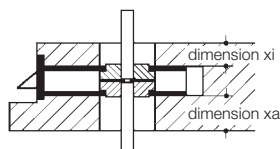
Right handed means that the end of the lever points to the right.



Latch and dead bolt operation

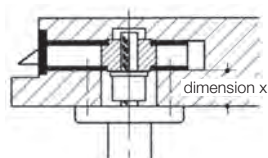
Lever spindles available: 7, 8, 8,5, 9 and reduced 10 to 8 mm.

Bolt spindle for bathroom or toilet door locks 7 or 8 mm.



Dimension "x inside" and "x outside"

for fire door fitting with split spindle



Dimension "x"

for half fittings

Standard configuration Stainless steel | Polyamide

In so far as only the item number is provided when ordering, we assume the following standard configuration is required:

1. Standard door fittings: door thickness = 40 mm, square spindle = 8 mm, keyway PZ, distance = 72 mm for backplate fittings
2. Fire door fittings: door thickness = 48 mm, square spindle = 9 mm, keyway PZ, distance = 72 mm for backplate fittings
3. Vacant/engaged fitting: door thickness = 40 mm, square spindle = 8 mm, emergency release with coin, distance = 78 mm for backplate fittings

DOOR FITTINGS ACCORDING TO EN 1906

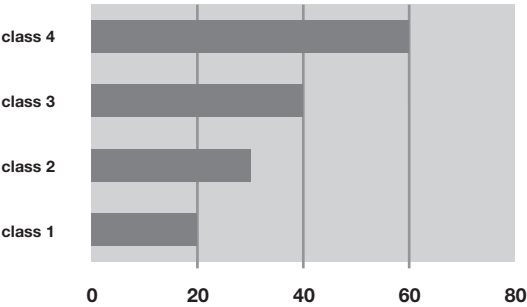
HEWI door fittings are tested and monitored to standard EN 1906. The standard defines the requirements and test methods. Our door fittings are classified according to a classification code which assigns the door fittings in

class 4 – R/H-technology, flat roses and bicolor.

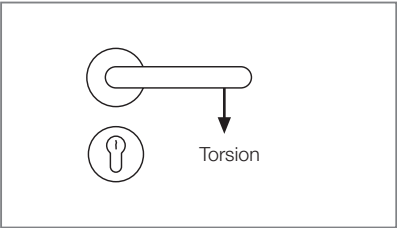
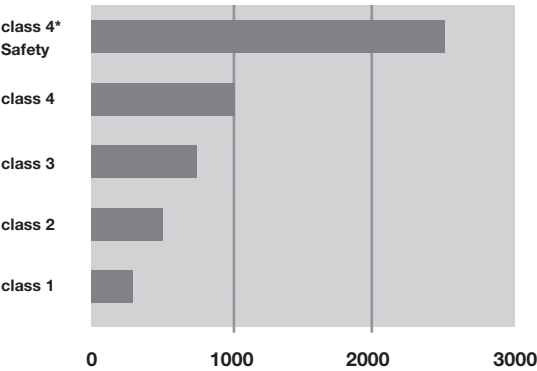
HEWI door fittings are continuously monitored during the production process and are tested in a continuous test beyond the normal requirements of the relevant standards. The door fittings are tested in a test setup in which the loading and movement processes are simulated. Following this load test with the chosen connection technology, HEWI door fittings do not show any signs of an increase in play.

Here are the most important criteria in EN 1906:
According to EN 1906, the following strengths must be achieved for the torsional and tensile strength:

Torsional strength

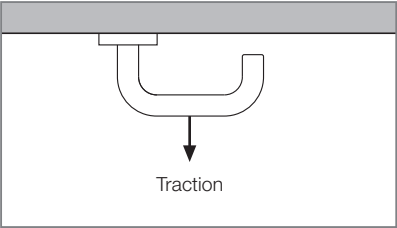
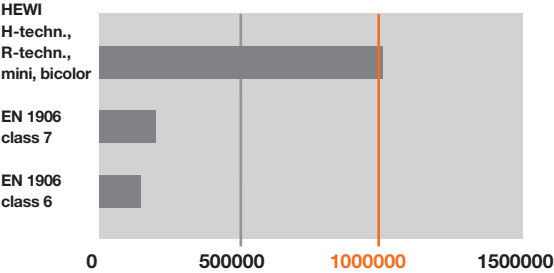


Tensile strength



bicolor, mini, H- and R-technology products in class 4 „Safety“ fulfil the increased requirements for additional testing with a tensile load of $F = 2500\text{ N}$. The „Safety“ test must not be confused with the term „Security Fittings“.

Durability (test cycles)



*5th digit in the classification key

As far as the application of the above European standard is concerned, door lever handles and door knobs on backplates or roses are classified in accordance to the following 8-digit keys:

e. g. HEWI H-technology | 8 mm square 111XAH01.130

4	7	-	0	1	5	0	A
---	---	---	---	---	---	---	---

e. g. HEWI H-technology | 9 mm square 111XAH11.130

4	7	-	B1	1	5	0	A
---	---	---	----	---	---	---	---

e. g. HEWI R-technology | 9 mm square 111R11.230

4	7	-	D1	1	5	0	U
---	---	---	----	---	---	---	---

Specification for tender	Key	Possible class	Class	Meaning of the class
Category of use	1	1 to 4	1	Medium frequency of use by persons with high incentive to exercise care, small chance of misuse (e.g. internal residential doors)
			2	Medium frequency of use by persons with high incentive to exercise care, some chance of misuse (e.g. internal office doors)
			3	High frequency of use by the public or others with little incentive to exercise care and high chance of misuse (e.g. public office doors)
			4	High frequency of use on doors subject to frequent violent use or damage (e.g. doors in sports stadiums, barracks or public buildings)
Durability	2	6 to 7	6	100.000 test cycles
			7	200.000 test cycles
Door weight	3	irrelevant	–	No classification specified
Fire resistance	4	0, A, B, C or D	0	No performance defined
			A	Suitable for installation in smoke control doors
			A 1	do., with 200.000 test cycles tested on a test door
			B	Suitable for installation in smoke control and fire doors
			B 1	do., with 200.000 test cycles tested on a test door
			C	Suitable for installation in smoke control and fire doors with backplate and rose requirements
			C 1	do., with 200.000 test cycles tested on a test door
			D	Suitable for installation in smoke control and fire doors with lever handle core requirements
			D 1	do., with 200.000 test cycles tested on a test door
Safety	5	0 or 1	0	For normal use
			1	Safety requirements
Corrosion resistance	6	0 to 5	0	No classification specified
			1	Low corrosion resistance (24 h salt spray test)
			2	Moderate corrosion resistance (48 h salt spray test)
			3	High corrosion resistance (96 h salt spray test)
			4	Extremely high corrosion resistance (240 h salt spray test)
			5	Extraordinarily high corrosion resistance (480 h salt spray test)
Security (burglary protection)	7	0 to 4	0	Not burglary resistant
			1	Low burglary resistance
			2	Moderate burglary resistance
			3	High theft protective
			4	Extremely high theft protective
Design type	8	A, B or U	A	With spring assistance
			B	With spring preload
			U	Without spring assistance



FIRE DOOR FITTINGS ACCORDING TO DIN 18273

Fire door fittings are subject to special requirements with respect to their design, functional and load criteria. These requirements are defined in the following standards:

DIN 4102, Part 5 + 18
DIN 18082, Part 1
DIN 18095, Part 1 + 2
DIN 18273

HEWI fire door fittings fulfil the requirements of the DIN standards and have been tested. HEWI fire door fittings are quality monitored according to the guidelines of construction products list A (6.17) and have monitoring certificate. For more information, please visit: www.hewi.com

Please note:

This only applies if the fittings are installed as a complete unit with all accessory parts from a single manufacturer, i.e. the components of several manufacturers may not be mixed.

Quote from DIN18273, Section 5.1:

„Lever handle fittings for fire and smoke-proof doors must form an assembly whose individual parts must be coordinated with each other by the fittings manufacturer. The fittings manufacturer must name and label these individual parts as belonging together (e.g. in parts lists).

Putting together lever handle fittings from unnamed individual parts – even of the same manufacturer – is not permitted, even if it has been verified that these individual parts are suitable according to this standard.“

The „Fachverband Schloss+Beschlagindustrie“ – trade association for the lock and fittings industry in Germany, has published the following information on the uniform procedure of fitting manufacturers in Germany with respect to fire door fittings and components:

Supplementary notes on lever handle fittings for fire and smoke-proof doors to DIN 18273

Supply as complete assembly

If the complete lever handle assembly is supplied for fire and smoke-proof doors by one fittings manufacturer in the form of spindle, lever handle, bearing and accessories, the procedure remains as to date; separate marking of the complete supplied unit is not necessary. Naming of compliance of the products with DIN 18273 is contained on the accompanying documents, separate marking of the individual parts is not necessary.

Supply of fire door fittings as individual components

If the fittings are supplied as individual parts, several obligations to maintain the Ü marking in accordance with DIN 18273 are transferred to the fittings trader/seller. They must point out in their documentation that only components which belong together fulfil the criteria of DIN 18273. The fittings traders must clearly assign components which belong together in their documentation according to the manufacturer's information.

Different lever handles of a fittings manufacturer may look different but belong to the same technical type. If components are supplied individually to the trade by the fittings manufacturer, a marking is attached to the outer packaging or the product. This marking has the following uniform form:

Manufacturer's mark + 

The fittings trader is then responsible of informing the installation company/buyer in a suitable way. The installation firm/user is responsible for selecting and installing approved combinations only.

Free composition by fittings trade/installation firm (user)

Free composition of fire door fittings from components of one manufacturer or even the mixing of lever handle fittings of different manufacturers suitable for fire and smoke protection is not permitted.

FIRE AND SMOKE CONTROL DOORS

Fittings for fire and smoke control doors are available in R/H-technology with following functions:

Fire door fitting

Function: the door can be locked with a key from the inside and outside. Unlocked doors can be opened from both sides with the lever handle.

Germany

- Tested to DIN 18273FS and marked with the „Ü“ seal
- Square spindle 9 mm
- Flat roses are exclusively tested according to DIN 18273

Austria

- Marked and tested to ÖNORM B3859
- Square spindle 8,5 mm
- Frame door roses are excluded from ÖNORM B3859

Fire door fittings for lever spindle 8 mm (e.g. switzerland) on request

Apartment fire door fitting

Function: the door can be locked with a key from the inside and outside. The unlocked door can be opened from the inside with the lever handle, but from the outside, only with the key.

Germany

- Tested to DIN 18273FS and marked with the „Ü“ seal
- Square spindle 9 mm

Austria

- Marked and tested to ÖNORM B3859
- Square spindle 8,5 mm
- Frame door roses are excluded from ÖNORM B3859

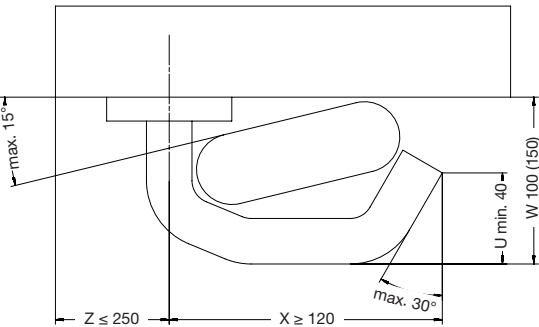
Fire door fittings for lever spindle 8 mm (e.g. switzerland) on request

Fire door fitting with split spindle

Function: the door can be locked with a key from the inside and outside. Unlocked doors can be opened from both sides with the lever handle. Should the door be locked, the handle unlocks the door in the direction of the escape route. This is made possible by an anti-panic-pin which is split in the middle, each part being able to rotate independently. Anti-panic fittings can only be used in conjunction with a lock for escape doors (with split lock nut).

- Tested to DIN 18273FS and marked with the „Ü“ seal
- Anti-panic square spindle 9 mm
- Test to EN 179 on request

DIMENSIONAL REQUIREMENTS



- Legend**
- U** minimum size of the returning lever handle end
 - W** maximum projection
 - X** minimum length
 - Z** distance from the end face of the door

NOTES ON EN 179 AND EN 1125

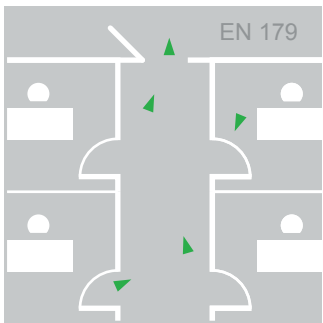
The two standards have been applicable since 2004. A revised version of both standards was published in 2008. There is no obligation to apply the standards merely because they are applicable. An obligation to apply the standards in Germany only exists if they are specified in the building codes („Landesbauordnungen“ – LBO) or in the model building regulations („Musterbauverordnungen“- MBO) of Germany’s individual federal states. In their LBOs, the 16 federal states refer to the Construction Products Lists („Bauregelliste“) so that products do not have to be tested and approved in each of the individual federal states. The standards listed in the Construction Products Lists automatically apply to all LBOs. As standards EN 179 and EN 1125 are harmonised European standards, these two standards should be included in Construction Products List Part B and would therefore have to be applied. They were included in the Construction Products List, but were removed again some time later. The standards are not included in the current Construction Products List Part B. The federal states currently distance themselves from general mandatory application of EN 179 and EN 1125 for doors in escape routes, but point out that precisely this application can be required by the responsible building control authority on a case-by-case basis.

RECOMMENDED APPLICATION

With immediate effect, always specify/ install all fittings for escape routes to EN 179 (emergency exit devices) or EN 1125 (panic exit devices). Define the respective type of closure for all relevant doors in the building (emergency exit or panic exit device) and specify them as separate items in the bill of quantities. Separate tender items for the lock and fitting too: Choose the required fittings first and then the relevant approved locks/accessory components.

If you are uncertain what to specify for emergency exit or panic doors, to be on the safe side, use a panic bar.

DOOR FITTINGS AND LEVER HANDLE



Emergency Exit Device | General Information

Not only the relevant door fittings or lever handles are required for functioning certified emergency exit devices, but also a lock with strike! Several criteria which the door fittings must fulfil are listed below. Depending on the type, the standard differentiates between single leaf and double doorset (two leaf) emergency exit devices, so that other components also belong to the emergency exit device. In the event of an emergency, the emergency exit device should enable the fastest possible evacuation of the room through the emergency exit door with only one hand movement. Regardless of whether the door is locked or only the latch closes the door.

The standard is applied to emergency exits at which panic situations are not to be expected. The people in the building are familiar with the exits and their fittings.

Emergency exit device according to this standard, Type A

HEWI, together with a large number of lock manufacturers, has subjected the R and H technology door fittings to testing and certification. These products have been certified by a recognised certification body and issued with a CE conformity marking.

SYSTEM 111 POLYAMIDE | MATT EDITION



Model 111...
pages 112, 118



Model 111.23...
pages 114, 120



Model 114.23GK...
pages 116, 121



Model 115.23
page 117



SYSTEM 162 POLYAMIDE | MATT EDITION



Model 165.21P...
pages 132, 136



Model 166.21P...
pages 133, 137



SYSTEM 100 STAINLESS STEEL



Model 103X
page 54



Model 104X
page 55



RANGE 270 STAINLESS STEEL



New
Model 272XA
page 101



New
Model 273XA
page 102



SYSTEM 111 STAINLESS STEEL



Model 111X
page 62



Model 112X
page 64



Model 113X
page 65



SYSTEM 162 STAINLESS STEEL



Model 165X
page 74



Model 166X
page 75



RANGE 170 STAINLESS STEEL



Model 173X
page 82



Model 174X
page 83



EXTRACT FROM EN 179

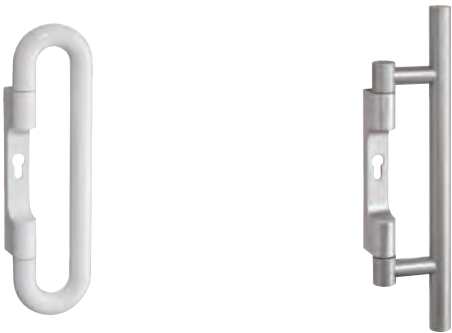
1	User category	3 = high frequency of use
2	Durability	6 = 100.000 test cycles 7 = 200.000 test cycles
3	Door weight	5 = ≤ 100 kg 6 = ≤ 200 kg 7 = > 200 kg
4	Use in smoke-proof and fire doors assambles	0 = not approved for use on fire/smoke door fire doors assambles A = suitable for use on smoke door assambles on basis of requirements according to B.1 B = suitable for installation in smoke-proof and fire doors on basis of a testing according EN 1634-1
5	Safety of people	1 = highest class
6	Corrosion resistance	3 = 96h EN 1670 4 = 240h EN 1670
7	Anti-burglary protection	2 = 1000 N 3 = 2000 N 4 = 3000 N 5 = 5000 N
8	Fitting protrusion	1 ≤ 150 mm 2 ≤ 100 mm
9	Type of operation	A = lever handle operation B = push pad operation

HEWI certified emergency exit fittings are marked with the following symbol:



Emergency exit device according to this standard, Type B

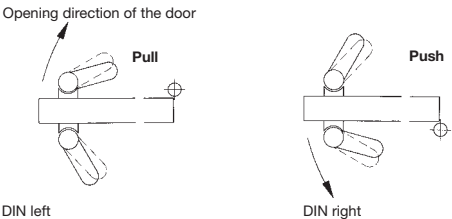
HEWI lever handles made from stainless steel and polyamide are classified in the category emergency exit device TYPE B according to EN 179. HEWI lever handles are tested and certified.
The following lever handles are approved for combinations with lock and strike series:



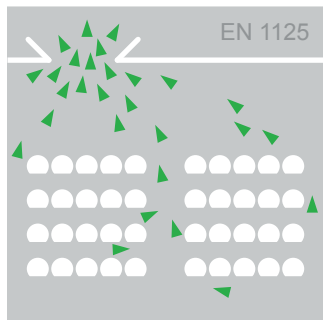
FSDG...8... | 111PBDG...

162XADG...6...

Not only the appropriate lever handles are required for a functioning, certified emergency exit device, but also a lock with strike and other components/accessories depending on the emergency exit door or device.



NOTES ON EN 1125

Panic door devices with horizontal bar for doors in escape routes**General information**

Not only the relevant panic bars/touch bars are required for functioning certified panic door devices, but also a lock with strike! Depending on the type, the standard differentiates between single leaf and double doorset (two leaf) emergency exit devices, so that other components also belong to the emergency exit device.

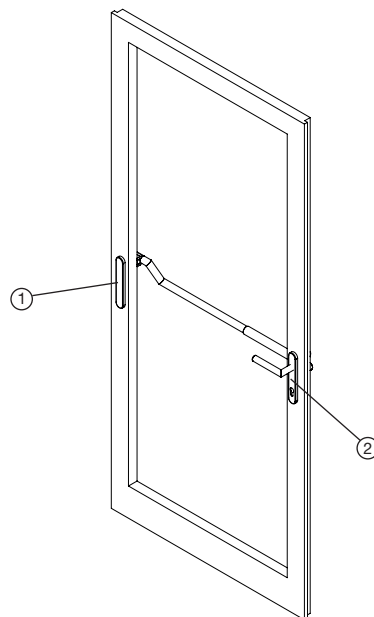
In the event of an emergency, the emergency exit device should enable the fastest possible evacuation of the room through the emergency exit door. Regardless of whether the door is locked or only the latch closes the door.

The emergency exit door must be able to be opened using the panic bar even if a compressive force of 1000 N is applied to the door. The release force on the panic bar may not exceed 220 N. This and other requirements are documented in EN 1125, e.g. durability, fire protection, resistance to abuse, etc. The panic door devices must be tested and certified to this standard. A CE marking on the product ensures that only tested panic door devices conforming to the standard are installed.

**The standard is applied to emergency exits at which panic situations can occur.
The people in the building are not familiar with the exits and their fittings.**

Locking plate for panic bar fixing

Locking plates consist of a doorplate (1) and a lever handle with backplate 219... (2) for screw fixing the panic bar



EXTRACT FROM EN 1125

1	User category	3 = high frequency of use
2	Durability	6 = 100.000 test cycles 7 = 200.000 test cycles
3	Door weight	5 = ≤ 100 kg 6 = ≤ 200 kg 7 = > 200 kg
4	Use in smoke-proof and fire doors assamblies	0 = not approved for use on fire/smoke door fire doors assamblies A = suitable for use on smoke door assamblies on basis of requirements according to B.1 B = suitable for use on fire/smoke door assamblies on on basis of a test according EN 1634-1
5	Safety of people	1 = highest class
6	Corrosion resistance	3 = 96h EN 1670 4 = 240h EN 1670
7	Anti-burglary protection	2
8	Fitting protrusion	1 ≤ 150 mm 2 ≤ 100 mm
9	Type of operation	A = push bar B = touch bar
10	Field of door application	A = single- and double-leaf doors, active and inactive leaf B = only for single-leaf doors C = for double-leaf doors, leaf inactive

HEWI certified emergency exit fittings are marked with the following symbol:



The corresponding certificates are available from the lock manufacturers and HEWI.

Panic door device with bar

HEWI panic bars and handles are classified in the category emergency exit device TYPE A and B according to EN 1125. HEWI panic bars and handles are tested and certified. The following products are approved for combinations with lock and strike series:

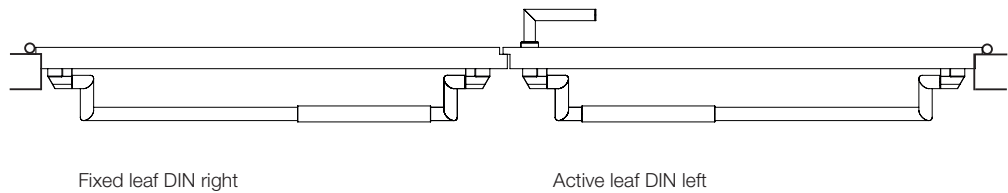


PS111XA...

PS160XA...

HEWI, together with the following lock manufacturers, has had the panic bars certified: Assa Abloy, BKS, BMH, Fuhr, GEZE, Grundmann, KfV, MSL, DOM or Wilka.

DIN directions for panic bars



GLASS DOOR FITTINGS WITHOUT ROSES

Glass door fittings without roses require a door fitting with a spindle connection and a special bearing sleeve to reduce the bearing diameter from D = 18 mm to D = 16 mm. Ordering by means of the product number for glass door fittings, e.g. 111XAG01.100 includes the pair of lever handles and the bearing bush.

If you require a glass door fitting which does not have a product number, you can also order it as individual parts. All pairs of lever handles made of stainless steel (H technology) and PVC (R technology) are possible.

In addition, you must also order the bearing bush:

2x Item number 53712 (Synthetic material black glossy) or

2x Item number 70422 (Synthetic material black matt).

We have tested our glass door fittings with locks made by Dorma Glas and Wilhelm Schlechtendahl & Söhne.

The different glass door locks of the two manufacturers for installation without rose can be installed with HEWI's fittings without roses.

GLASS DOOR FITTINGS WITH ROSES

The glass door locks with roses require a door fitting with a latching technique and/or spindle connection.

The connection system is included in both the H technology (e.g. stainless steel) and in R technology (PVC).

Ordering by means of the existing product number for a glass door fitting, e.g. 100XAG01.130 includes the pair of lever handles and roses and a fixing set.

If you require a glass door fitting which does not have a product number, you can also order it as individual parts. All pairs of lever handles made of stainless steel (H technology) and plastic/PVC (R technology) with corresponding roses and fixing materials are possible here,

e. g. 101XAH | Square 8 mm | Door thickness 40 mm – 305.20SXAH | Door thickness 40 mm or 111.23R | Square 8 mm | Door thickness 40 mm – 305.23R | Door thickness 40 mm.

The glass door locks made by Dorma Glas, e.g. Dorma Junior Office or Junior Office Classic can be used with the standard range of H/R technology roses. The glass door locks provide the option of screwing the roses onto each other. Further, the glass door lock made by Wilh. Schlechtendahl & Söhne Atelier F/R Business Line can be used with Hewi's standard products.

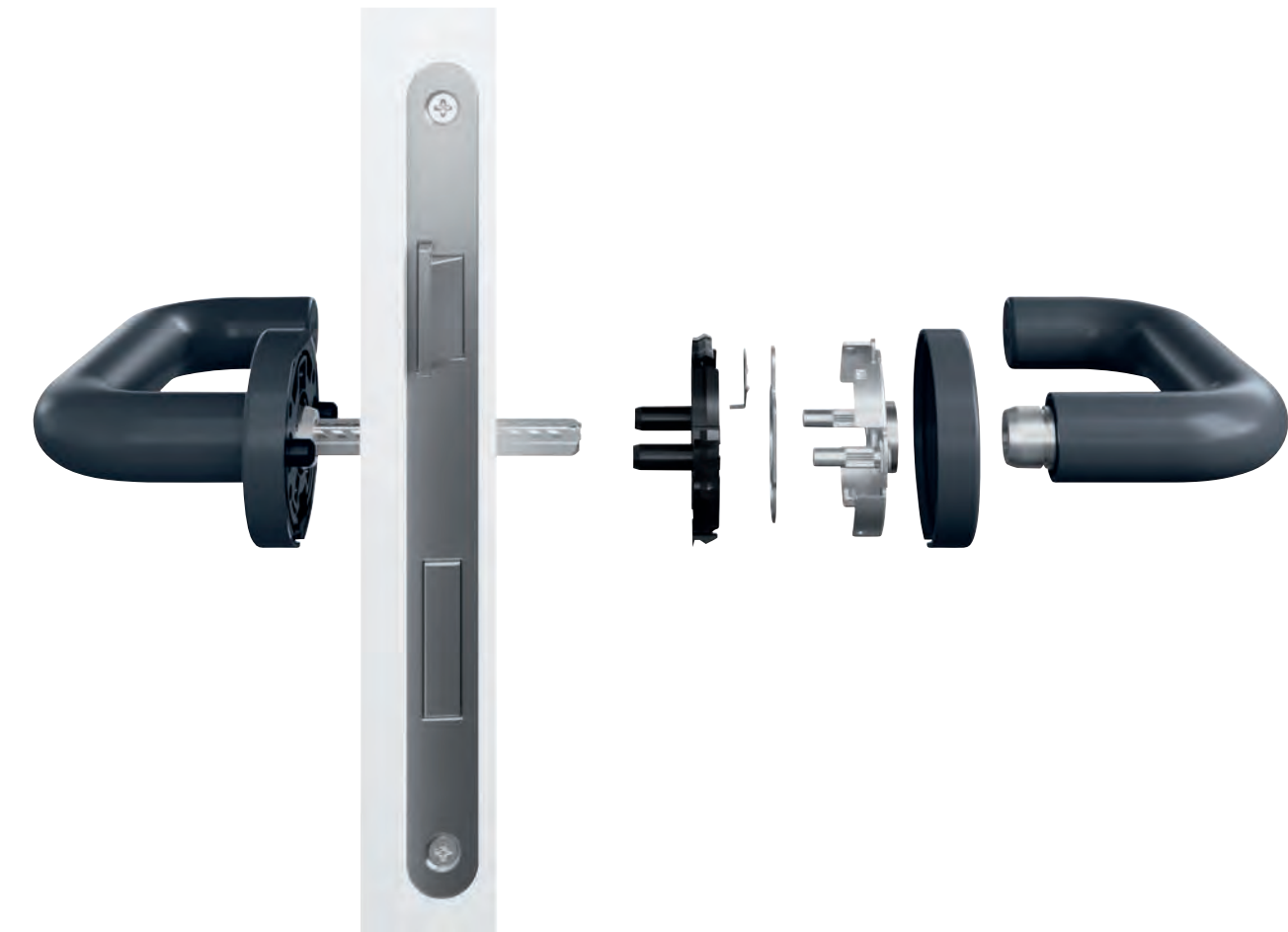
With the glass door locks made by Dorma Glas - Studio Rondo/Studio Classic – you can order the lock prepared for door fitting installation at the front or rear, see www.dorma-glas.de.

HEWI's fixing materials include the materials required for this special installation.

The Studio – Privat Line made by Wilh. Schlechtendahl & Söhne can be combined with the pairs of lever handles and the round roses in the R-technology range. If ordering H technology together with this glass door lock, please contact our support department. In this way, you can use all door fittings as glass door fittings with and without roses.

R-technology | Category of use 4

Frequently used doors in public buildings | Vandalism



Functional aspects

Specification for tender

1 Category of use	class 2/4
2 Durability	class 7
3 Door weight	no classification specified
4 Fire resistance	class 0, optional class D1
5 Safety	class 1
6 Corrosion resistance	class 5
7 Anti-burglary protection	class 0
8 Design type	U

Examples:

Door fitting with 7 mm spindle:

2 7 - 0 0 5 0 U

Door fitting with 8 or 8,5 mm spindle:

4 7 - 0 1 5 0 U

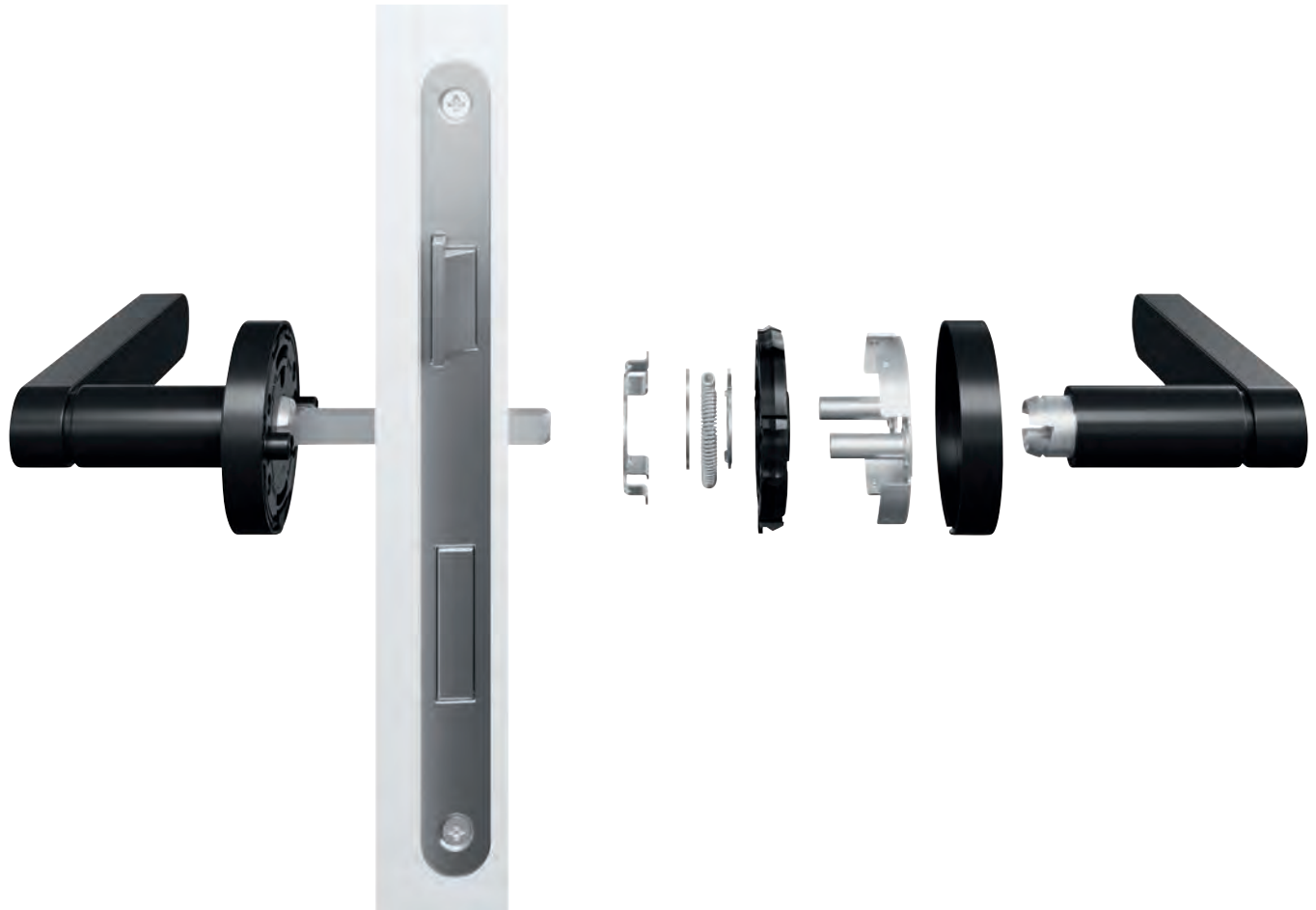
Fire protective fitting with 9 mm spindle:

4 7 - D1 1 5 0 U F

- Tested and certified for over 1.000.000 movement cycles
- Suitable for the projects segment (non-private housing) to DIN 18255 and EN 1906
- Fast installation (lever handles are latched into the bottom sections already mounted on the door)
- Non-loosening, concealed screw fastening with sleeved screws and support lugs
- 12 mm bearing point as maintenance free plain bearing
- The spindle balances out the play between the female parts
- Fixed rotating bearing with self-latching locking system
- Corrosion resistance
- Fire door fittings to DIN 18273 available F

H-technology | Category of use 4

Frequently used doors in public buildings | Vandalism



Technical information

Functional aspects

Specification for tender

1 Category of use	class 2/4
2 Durability	class 7
3 Door weight	no classification specified
4 Fire resistance	class 0, optional class B1 or D1
5 Safety	class 1
6 Corrosion resistance	class 5
7 Anti-burglary protection	class 0
8 Design type	A

Examples:

Door fitting with 7 mm spindle:

2 7 - 0 1 5 0 A

Door fitting with 8 or 8,5 mm spindle:

4 7 - 0 1 5 0 A

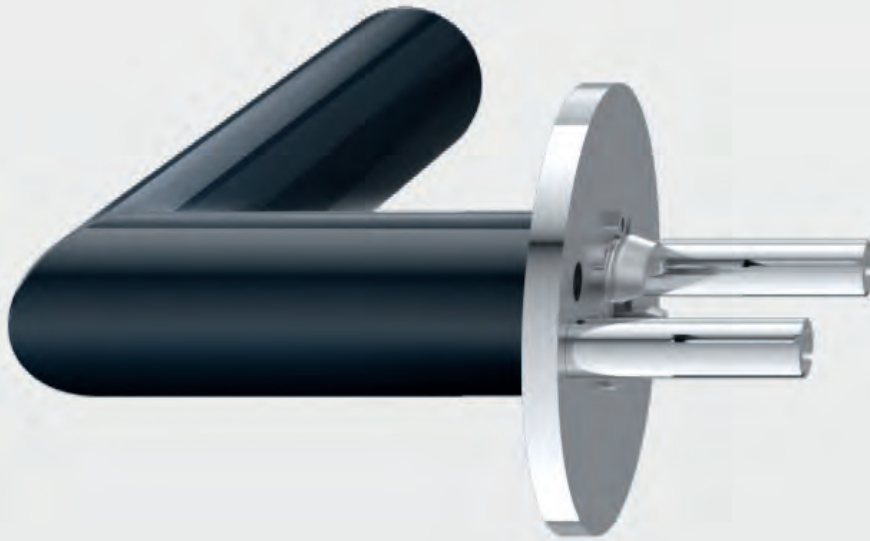
Fire protective fitting with 9 mm spindle:

4 7 - B1 1 5 0 A **F**

- Tested and certified for over 1.000.000 movement cycles
- Suitable for the projects segment (non-private housing) to DIN 18255 and EN 1906
- Fast installation (lever handles are latched into the bottom sections already mounted on the door)
- Non-loosening, concealed screw fastening with sleeved screws and support lugs
- M5 setscrews
- 5 mm bearing point as maintenance free plain bearing
- Support module can be used on left and right
- Fixed rotating bearing with self-latching locking system and additional grubscrew connection
- Corrosion resistance
- Fire door fittings to DIN 18273 available **F**

bicolor

Easy assembly



The innovative mounting technology of the flat rose enables extremely fast and permanent fixing without screws. For the fixing, latching sleeves and threaded bolts are pushed into each other, so that they lock together and are pull-resistant. The quick connection makes installation and dismantling simple. Fire door fitting sets to DIN 18273 complete the projects range.

Despite the compact overall height of only 4 mm, the flat rose with latching connection fulfils the requirements of EN 1906 in category of use 4 for very high frequency of use. This makes bicolor suitable not only for housing but also for office and commercial buildings.



Push it!

- Fast latching together of preassembled assemblies
- Secured with a setscrew

Functional aspects

Specification for tender

1 Category of use	class 2/3/4
2 Durability	class 7
3 Door weight	no classification specified
4 Fire resistance	class 0, optional D1
5 Safety	class 1
6 Corrosion resistance	class 5
7 Anti-burglary protection	class 0
8 Design type	U

Examples:

Door fitting with 7 mm spindle:

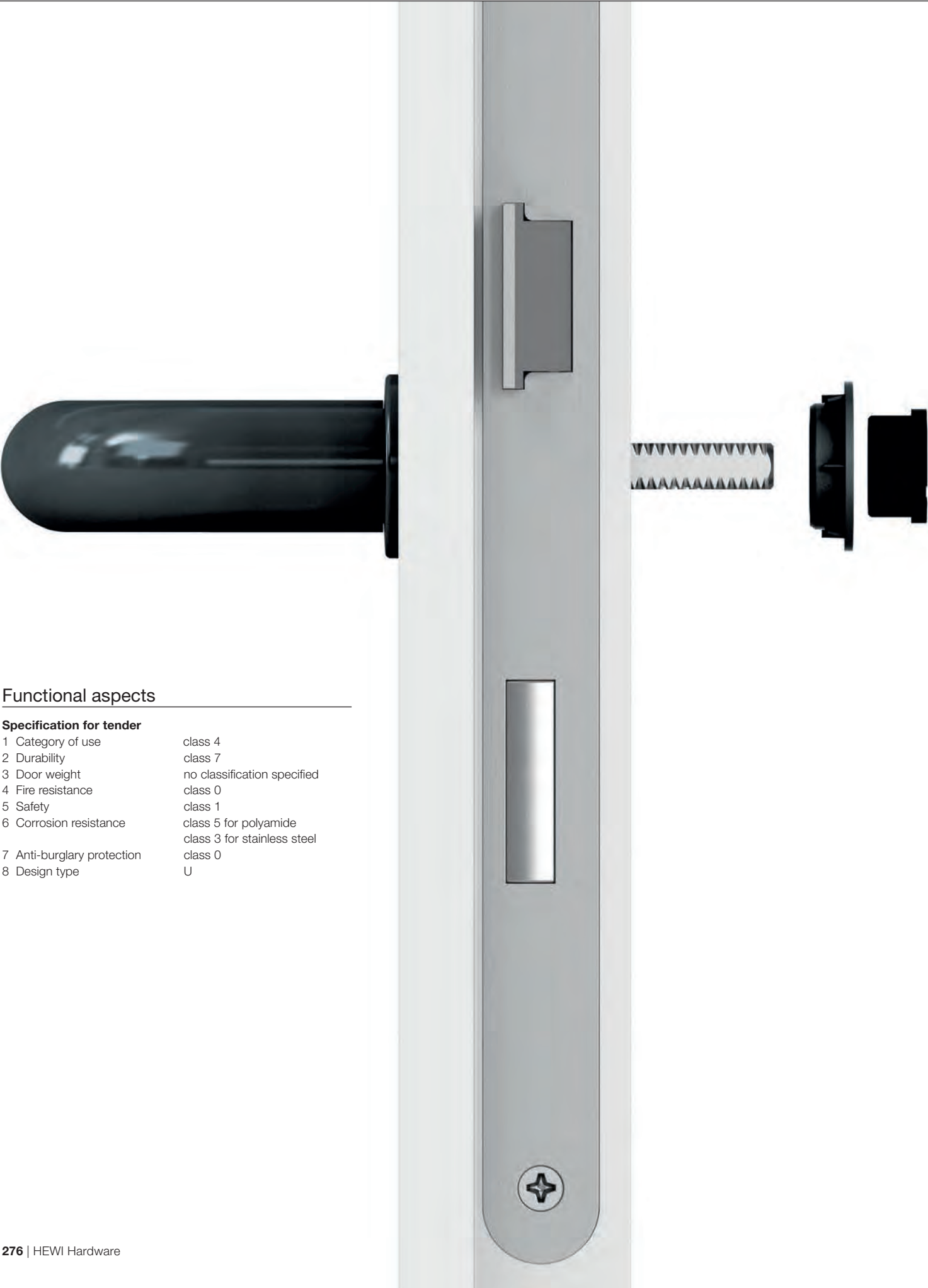
2 7 - 0 0 4 0 U

Door fitting with 8 or 8,5 mm spindle:

3 7 - 0 0 4 0 U

Fire protective fitting with 9 mm spindle:

4 7 - D1 1 4 0 U **F**

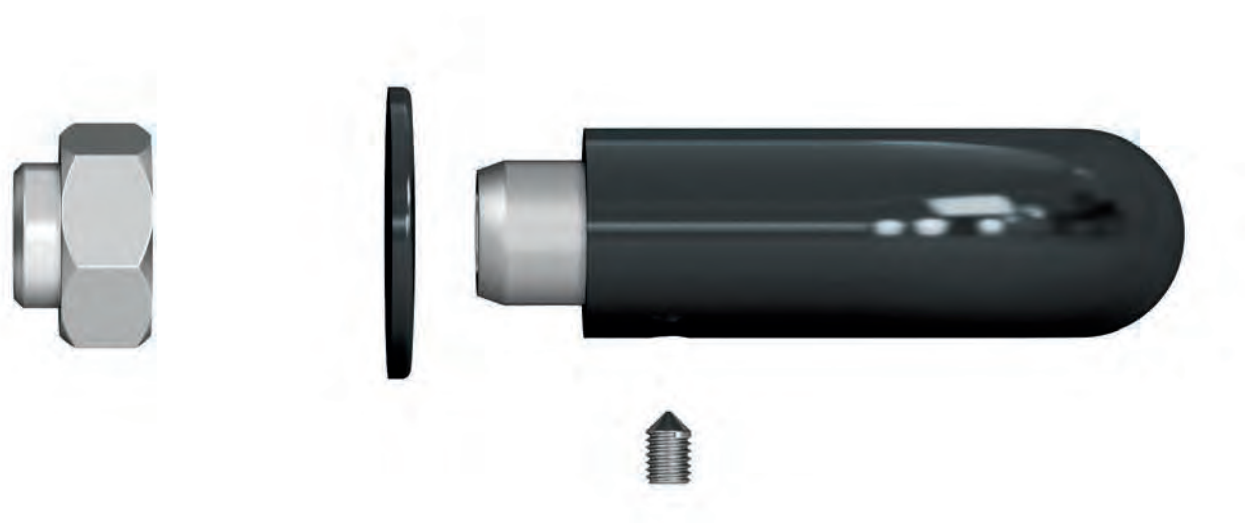


Functional aspects

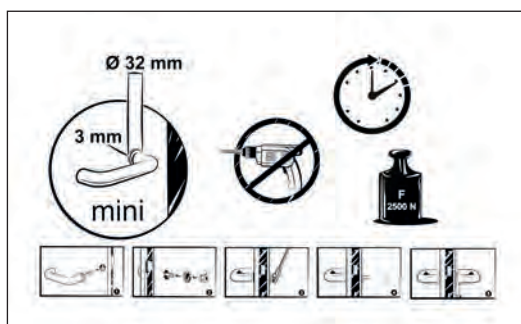
Specification for tender	
1 Category of use	class 4
2 Durability	class 7
3 Door weight	no classification specified
4 Fire resistance	class 0
5 Safety	class 1
6 Corrosion resistance	class 5 for polyamide class 3 for stainless steel
7 Anti-burglary protection	class 0
8 Design type	U

Installation concept mini

Innovative technology



- HEWI patent
- Suitable for contract use according to EN 1906, category of use 4
- With 1.000.000 tested cycles of use, mini is certified for durable and reliable quality
- For interior and residential doors in the private sector
- For doors in office and commercial buildings
- The innovative press-fit bearing is permanently connected to the door
- Alignment inaccuracies are compensated for during assembly
- Cover Roses are pressed on and are interchangeable
- Can be combined with all commercially available locks



The installation film on our website shows you just how easy the mini fixing is (www.hewi.com/en/mini).

Unique fixing Clever mounting technology



1. On rebated doors, insert the mounting wedge between the lock and cutout hole.
2. The preassembled lever spindle part with press-in bearing is pushed through the lock follower.
3. The press-in bearing on the other side is screwed into the door leaf with a nut, which serves as a mounting aid, and a ring spanner AF 19.

4. As a result the press-in bearings press themselves into the door leaf. The mounting aid (nut) can now be removed.
5. The press-in bearing is concealed by a mini rose.
6. The second lever handle is then pushed onto the spindle and is fixed with a setscrew.

The installation film on our website shows you just how easy the mini fixing is (www.hewi.com/en/mini).

Technical requirements

Conditions for mounting mini

Door structure

Mounting is possible on both non-rebated and rebated doors. mini is recommended on residential and office building internal doors made of hollow core particleboard, with a solid particleboard insert or of a higher quality.

Please note that we only recommend mounting to door elements tested by HEWI. Also, mini can be fitted to non-tested door elements. However, in this case, HEWI cannot guarantee flawless mounting and permanent fitness of use. An up-to-date list of the tested door models can be found on our website at www.hewi.com/en/mini.

Cut size | Lever handle

The cut size (hole size) in the area of the lock follower must have a nominal size of 25 mm. Production tolerances of ± 1 mm can be levelled out by the press-in bearing.

Cut size | Euro cylinder or warded mortise

The cut size in the area of the escutcheons (euro cylinder/warded mortise) may be 25 x 40 mm maximum ± 1 mm.

Cut size | Rose with turn knob

The cut size for mounting roses with a knob must have a nominal size of 25 mm ± 1 mm

Square spindle dimensions

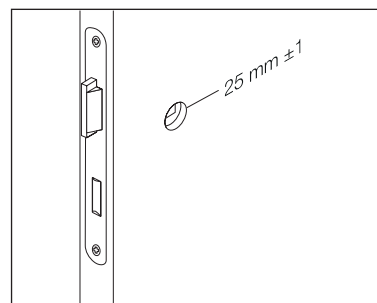
mini is available with a square 8 mm and square 8.5 mm, and with a lock square 7 mm for door thicknesses ranging from 38.1 mm to 78 mm.

Area of use

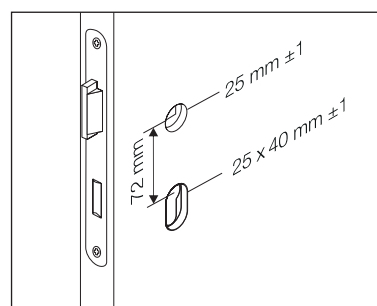
mini fulfils the EN 1906 requirements for category of use 4. mini can be used wherever internal doors are used with low to medium frequency. mini is not suitable for use on doors with functions such as fire protection, smoke control, burglar resistance, wet-room use or radiation protection. With more than 1 million tested use cycles, an independent test institute has certified the permanently reliable quality of mini.

Design planning and advice

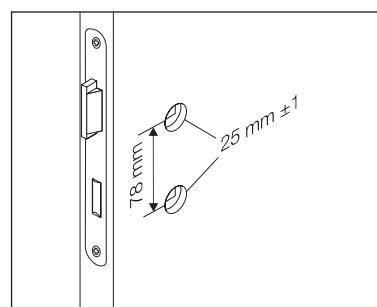
We would be pleased to advise you in person. Please contact our support team if you have any questions. You can reach them by phone, on +49 5691 82-300, or by email, at international@hewi.com



Cut size | Standard door



Cut size | Euro cylinder or warded mortise



Cut size | Rose with turn knob

CLASSIFICATION OF ITEM NUMBERS

ION OF RS		162	P	C	I	X	01.	2	3	0	90
		Polyamide colour 90 (jet black)									
		Knob 0 = No knob									
		Rose 3 = Round rose 305.../306...									
		Lever handle model 1 = Lever handle 251.21PB, 271XP 2 = Lever handle 111.23..., 162.21P...									
		Fitting type 01. = Standard door fitting 02. = Vacant/engaged fitting 06. = Lever handle (pair) with roses 11. = Fire door fitting									
		Surface of roses X = Flat roses, stainless steel, matt V = Flat roses, PVD coated, matt, surface finish of choice									
		Technology I = Flat roses with inlay made of coloured polyamide (for range 270 inlay made of black matt polyamide)									
		Surface B = Matt C = Glossy P = Black matt powder-coated (stainless steel)									
		Material P = Synthetic material X = Stainless steel									
System Range	111 = System 111	Polyamide									
	162 = System 162	Polyamide									
	250 = Range 250	Matt edition									
	270 = Range 270	Stainless steel									

CLASSIFICATION OF ITEM NUMBERS

ION OF RS	162	P	C	M	01.	2	3	0	90
									Polyamide colour 90 (jet black)
							Knob	0 = No knob	
						Rose	3 = mini round rose		
			Lever handle model				1 = Lever handle 111XAM, 251.21PBM, 270XAM, 270XPM 2 = Lever handle 111.23PBM, 111.23PCM, 162.21PBM, 162.21PCM, 162XAM		
			Fitting type				01. = Standard door fitting 02. = Vacant/engaged fitting 06. = Lever handle (pair) with roses		
			Technology			M = mini roses			
Surface lever handle			A = Matt (stainless steel) C = Glossy (polyamide) P = Powder-coated (stainless steel)						
Material			P = Synthetic material X = Stainless steel						
System Range	111 = System 111 162 = System 162 250 = Range 250 270 = Range 270			Polyamide and stainless steel Polyamide and stainless steel Matt edition Stainless steel					

**CLASSIFICATION OF
ITEM NUMBERS**

162	P	C	H	03.	2	3	3	90
								Polyamide colour 90 (jet black)
							Knob	0 = No knob 2 = Knob 122.23 3 = Knob 123.23 5 = Knob 105X 6 = Knob 106X, 276X 7 = Knob 107X, 277X 8 = Knob 108X, 138 9 = Knob 109X
							Rose Backplate	1 = Backplate 230... 3 = Round rose 305.../306... 4 = Oval rose 315.../316... 5 = Backplate (short) 219... 7 = Backplate (long) 235... 8 = Backplate (short) 217... A = Square rose 307.../308... B = Rectangular rose 317.../318... C = Rectangular backplate 220...
							Lever handle model	1 = Lever handle 101X, 111, 111X, 271X 2 = Lever handle 111.23, 112X, 162.21P, 162X, 272X 3 = Lever handle 103X, 113X, 173X, 273X 4 = Lever handle 104X, 114.23GK, 174X, 274X 5 = Lever handle 115.23, 165.21P, 165X, 185X 6 = Lever handle 166.21P, 166X
							Fitting type	01. = Standard door fitting 02. = Vacant/engaged fitting 03. = Apartment door fitting 05. = Vacant/engaged fitting with extended turn knob 06. = Lever handle (pair) with roses 11. = Fire door fitting 12. = Fire door fitting with split spindle 13. = Apartment fire door fitting 17. = Locking plate panic bar 22. = Front door half-fitting, ES1 (according to DIN 18257) 23. = Front door half-fitting, ES1 ZA (according to DIN 18257) 51. = Framed door fitting 52. = Fitting for framed fire doors
							Technology	H = H-technology Stainless steel R = R-technology Polyamide G = Glass door fitting
							Surface	A = Satin finished Ranges/Systems 100X, 111X, 162X, 170X, 180X, 270X B = Polyamide matt Systems 111P, 162P C = Polyamide glossy Systems 111P, 162P O = Overlay glass Range 180X Not specified = Products in polyamide
							Material	X = Stainless steel P = Synthetic material Not specified = Products in polyamide
							System Range	100 = System 100 Stainless steel 111 = System 111 Polyamide and stainless steel 162 = System 162 Polyamide and stainless steel 170 = Range 170 Stainless steel 180 = Range 180 Stainless steel 270 = Range 270 Stainless steel

