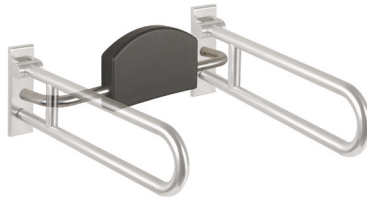
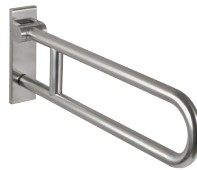


BACKREST RAILS
STATIONARY HINGED SUPPORT RAILS
NECESSARY FOR ALL

805.51.900

- c to c 670-730 mm adjustable on site
- 150 mm deep
- double-sided mounting
- padding made of black PUR
- rails made of stainless steel, satin finish



805.50.2...0
805.50.1...0 | rotatable


BM10.2.1 (on both sides)
BM10.2.2 (one-sided)

For fixing on walls made of concrete (> C20/C25)
 National technical approval number: ETA-11/0493

BM11.2.1 (on both sides)
BM11.2.2 (one-sided)

For fixing on walls

with mesh sleeve ø 18 mm

- hollow concrete block
- vertically perforated bricks
- hollow lightweight concrete block
- lightweight aggregate concrete with open structure

without mesh sleeve

- solid bricks
- perforated calcium silicate block

with mesh sleeve ø 22 mm

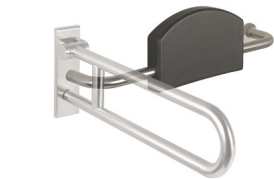
- autoclaved aerated concrete (> P2)

BM12.2.1 (on both sides)
BM12.2.2 (one-sided)

lightweight walls with rear lining made of laminated timber boards (with waterproof bonding, at least 30 mm thick required, e.g. studs or pre wall installation)

BM13.2.1 (on both sides)
BM13.2.2 (one-sided)

lightweight walls with integrated steel plates (e.g. studs or pre wall installation)


805.51.920R (right)
805.51.920L (left)

- c to c 670-730 mm adjustable on site
- 150 mm deep
- one-sided installation
- padding made of black PUR
- rails made of stainless steel, satin finish